



Officials: Roger Ayers, John Gaffney, Bart Lenox

Florida St. - 54

Record: 7-5 (1-2)

NO.	Name	Min	FG		3P		FT			Rebounds			Fouls		TP	AS	TO	ST	Blocks		+/-
			M-A	M-A	M-A	OR	DR	TOT	PF	FD	BS	BA									
10	Malik Osborne	F 32:15	2-8	0-4	2-2	1	7	8	0	2	6	0	0	1	0	0	1	0	0	0	-13
22	John Butler	F 13:23	0-1	0-1	0-0	0	1	1	3	0	0	0	0	0	0	2	0	0	0	0	-6
0	RayQuan Evans	G 19:39	3-8	0-4	0-0	0	3	3	2	1	6	1	0	2	1	0	1	0	0	-5	
2	Anthony Polite	G 27:17	1-8	1-6	0-0	1	4	5	3	1	3	0	3	3	1	0	1	0	0	-9	
4	Caleb Mills	G 29:29	2-13	0-3	6-6	0	2	2	4	4	10	2	2	1	0	2	1	0	2	-18	
1	Jalen Warley	18:42	0-3	0-0	0-0	1	0	1	2	0	0	1	0	1	1	0	1	0	0	-25	
24	Naheem McLeod	12:04	0-1	0-0	5-6	1	0	1	1	3	5	0	0	0	1	0	0	1	0	-13	
31	Wyatt Wilkes	12:42	2-5	2-5	0-0	0	2	2	1	1	6	1	1	0	0	0	0	0	0	-7	
35	Matthew Cleveland	19:53	3-8	0-0	7-11	1	1	2	4	6	13	0	3	3	0	1	0	1	-10		
21	Cam'Ron Fletcher	12:07	2-7	1-2	0-0	1	2	3	2	0	5	0	1	2	0	1	0	1	-8		
12	Justin Lindner	01:06	0-0	0-0	0-0	0	0	0	0	0	0	1	0	1	0	0	0	0	4		
15	Quincy Ballard	01:23	0-0	0-0	0-0	0	1	1	0	0	0	0	0	0	0	1	0	0	0		
Team										1	0	1			0						
<b>Totals</b>			15-62	4-25	20-25	7	23	30	22	18	54	6	10	16	5	4				-22	

Shooting By Period		
1 <sup>st</sup> FG%	7-31	22.6%
3PT%	3-15	20.0%
FT%	5-6	83.3%
2 <sup>nd</sup> FG%	8-31	25.8%
3PT%	1-10	10.0%
FT%	15-19	78.9%
GM FG%	15-62	24.2%
3PT%	4-25	16.0%
FT%	20-25	80.0%

Dead Ball Rebounds: 3, 0

Technical Fouls::NONE

Wake Forest - 76

Record: 12-3 (2-2)

NO.	Name	Min	FG		3P		FT			Rebounds			Fouls		TP	AS	TO	ST	Blocks		+/-
			M-A	M-A	M-A	OR	DR	TOT	PF	FD	BS	BA									
1	Isaiah Mucius	F 31:58	3-10	3-9	0-0	0	8	8	0	1	9	0	1	0	0	0	0	0	0	18	
13	Dallas Walton	C 17:22	1-3	0-1	3-4	1	4	5	4	3	5	1	2	0	3	1	7			7	
0	Jake LaRavia	G 38:31	6-9	1-2	9-11	2	5	7	3	7	22	5	8	0	1	1	21			21	
11	Carter Whitt	G 25:24	0-4	0-1	0-0	0	6	6	3	0	0	2	2	1	0	1	4			4	
31	Alondes Williams	G 28:07	7-13	0-1	6-7	2	4	6	4	6	20	4	5	0	0	0	19			19	
20	Khadim Sy	30:40	6-7	1-2	3-4	2	8	10	2	2	16	0	2	1	0	0	21			21	
2	Cameron Hildreth	23:31	1-7	0-3	0-1	1	4	5	1	3	2	3	0	2	0	2	17			17	
23	Lucas Taylor	01:29	0-1	0-0	0-0	0	0	0	1	0	0	0	0	0	0	0	1			1	
25	Robert McCray	01:29	1-1	0-0	0-0	0	1	1	0	0	2	0	0	0	0	0	1			1	
33	Matthew Marsh	01:29	0-0	0-0	0-0	0	0	0	0	0	0	0	0	0	0	0	1			1	
Team										3	2	5			0						
<b>Totals</b>			25-55	5-19	21-27	11	42	53	18	22	76	15	22	4	4	5	22				

Shooting By Period		
1 <sup>st</sup> FG%	9-23	39.1%
3PT%	4-13	30.8%
FT%	13-17	76.5%
2 <sup>nd</sup> FG%	16-32	50.0%
3PT%	1-6	16.7%
FT%	8-10	80%
GM FG%	25-55	45.5%
3PT%	5-19	26.3%
FT%	21-27	77.8%

Dead Ball Rebounds: 2, 0

Technical Fouls::NONE

	FSU	WFU
Biggest lead	6 (1 <sup>st</sup> 18:04)	25 (2 <sup>nd</sup> 10:10)
Best Scoring Run	9 (2 <sup>nd</sup> 8:26)	17 (1 <sup>st</sup> 6:48)
Lead Changes	1	
Times Tied	1	
Time with Lead	04:54	32:35

Points from	FSU	WFU
Turnovers	15	12
Paint	18	38
Second Chance	5	12
Fast Breaks	15	13
Bench	29	20

	Period by Period Scoring		
	1st	2nd	TOT
FSU	22	32	54
WFU	35	41	76



**Florida St. at Wake Forest**

01/04/22 LJVM Coliseum, Winston-Salem  
2021-22 Men's Basketball

Game Time: 7:00 PM

Game Duration: 1:57

Attendance: 4,782

Officials: Roger Ayers, John Gaffney, Bart Lenox

**Period 1**

**Quarter Starters:**

<b>WFU</b>	0 LaRavia J	1 Mucius I	11 Whitt C	13 Walton D	31 Williams A
<b>FSU</b>	0 Evans R	2 Polite A	4 Mills C	10 Osborne M	22 Butler J

Game Time	WFU	Score	Diff	FSU
20:00	13 WALTON D jumpball lost			22 BUTLER J jumpball won
19:45				4 MILLS C turnover lost ball (1)
19:20	13 WALTON D 3pt FG from turnover, jump shot missed			
19:16				22 BUTLER J defensive rebound (1)
18:57		<b>0-2</b>	<b>-2</b>	10 OSBORNE M 2pt FG in the paint, hook shot made (2)
18:49	1 MUCIUS I 3pt FG , jump shot missed			
18:46				0 EVANS R defensive rebound (1)
18:46	13 WALTON D foul personal (1 - 1)			0 EVANS R foul drawn (1)
18:30		<b>0-4</b>	<b>-4</b>	10 OSBORNE M 2pt FG outside the paint, jump shot made (4)
18:07	1 MUCIUS I turnover lost ball (1)			2 POLITE A steal (1)
18:04		<b>0-6</b>	<b>-6</b>	0 EVANS R 2pt FG fast break from turnover in the paint, layup made (2)
17:29	turnover shot clock (2)			
17:12				10 OSBORNE M 3pt FG from turnover, jump shot missed
17:09	31 WILLIAMS A defensive rebound (1)			
17:02	13 WALTON D foul drawn (1)			0 EVANS R foul shooting (1 - 1)
17:02	13 WALTON D free throw 1 - 2 made (1)	<b>1-6</b>	<b>-5</b>	
17:02	13 WALTON D free throw 2 - 2 missed			
17:02				10 OSBORNE M defensive rebound (1)
16:39				10 OSBORNE M 2pt FG outside the paint, jump shot missed
16:36	11 WHITT C defensive rebound (1)			
16:29	13 WALTON D foul drawn (2)			22 BUTLER J foul shooting (1 - 2)
16:29	13 WALTON D free throw 1 - 2 made (2)	<b>2-6</b>	<b>-4</b>	
16:29				0 EVANS R substitution out
16:29				1 WARLEY J substitution in
16:29	13 WALTON D free throw 2 - 2 made (3)	<b>3-6</b>	<b>-3</b>	
16:29	13 WALTON D substitution out			
16:29	20 SY K substitution in			
16:16		<b>3-9</b>	<b>-6</b>	2 POLITE A 3pt FG , jump shot made (3)
16:16				4 MILLS C assist (1)
16:01	31 WILLIAMS A turnover lost ball (1)			2 POLITE A steal (2)
15:54				1 WARLEY J 2pt FG from turnover in the paint, layup missed
15:54	defensive rebound (3)			
15:54	Timeout media			
15:54				2 POLITE A substitution out
15:54				10 OSBORNE M substitution out
15:54				22 BUTLER J substitution out
15:54				24 MCLEOD N substitution in
15:54				31 WILKES W substitution in
15:54				35 CLEVELAND M substitution in
15:32	20 SY K 2pt FG in the paint, layup made (2)	<b>5-9</b>	<b>-4</b>	
15:32	11 WHITT C assist (1)			
15:32	20 SY K foul drawn (1)			35 CLEVELAND M foul shooting (1 - 3)



**Florida St. at Wake Forest**

01/04/22 LJVM Coliseum, Winston-Salem  
2021-22 Men's Basketball

**Game Time:** 7:00 PM  
**Game Duration:** 1:57  
**Attendance:** 4,782

**Officials:** Roger Ayers, John Gaffney, Bart Lenox

Game Time	WFU	Score	Diff	FSU
15:32	20 SY K free throw 1 - 1 made (3)	<b>6-9</b>	<b>-3</b>	
15:23				4 MILLS C 2pt FG outside the paint, jump shot missed
15:20	11 WHITT C defensive rebound (2)			
15:12	31 WILLIAMS A 2pt FG in the paint, driving layup made (2)	<b>8-9</b>	<b>-1</b>	
14:51				31 WILKES W turnover out of bounds (1)
14:43	11 WHITT C turnover bad pass (1)			35 CLEVELAND M steal (1)
14:26	31 WILLIAMS A foul shooting (1 - 2)			24 MCLEOD N foul drawn (1)
14:26		<b>8-10</b>	<b>-2</b>	24 MCLEOD N free throw 1 - 2 made (1)
14:26	11 WHITT C substitution out			
14:26	13 WALTON D substitution in			
14:26		<b>8-11</b>	<b>-3</b>	24 MCLEOD N free throw 2 - 2 made (2)
14:26				4 MILLS C substitution out
14:26				21 FLETCHER C substitution in
14:21	31 WILLIAMS A foul drawn (1)			35 CLEVELAND M foul personal (2 - 4)
14:21				35 CLEVELAND M substitution out
14:21				2 POLITE A substitution in
14:03	20 SY K 3pt FG , jump shot made (6)	<b>11-11</b>	<b>0</b>	
14:03	31 WILLIAMS A assist (1)			
13:52				2 POLITE A 3pt FG , jump shot missed
13:49	1 MUCIUS I defensive rebound (1)			
13:50	1 MUCIUS I foul drawn (1)			31 WILKES W foul personal (1 - 5)
13:38	31 WILLIAMS A 3pt FG , jump shot missed			
13:35				21 FLETCHER C defensive rebound (1)
13:29				2 POLITE A 3pt FG , jump shot missed
13:26	1 MUCIUS I defensive rebound (2)			
13:24	jump ball situation			
13:23				1 WARLEY J substitution out
13:23				0 EVANS R substitution in
12:52	13 WALTON D 2pt FG in the paint, hook shot blocked			
12:52				24 MCLEOD N block (1)
12:52	31 WILLIAMS A offensive rebound (2)			
12:52	turnover shot clock (5)			
12:52	1 MUCIUS I substitution out			
12:52	2 HILDRETH C substitution in			
12:52				24 MCLEOD N substitution out
12:52				31 WILKES W substitution out
12:52				4 MILLS C substitution in
12:52				10 OSBORNE M substitution in
12:41				4 MILLS C 2pt FG from turnover in the paint, layup blocked
12:41	0 LARAVIA J block (1)			
12:38	31 WILLIAMS A defensive rebound (3)			
12:35	20 SY K 2pt FG fast break in the paint, layup made (8)	<b>13-11</b>	<b>2</b>	
12:35	0 LARAVIA J assist (1)			
12:09				4 MILLS C 2pt FG outside the paint, jump shot missed
12:05	13 WALTON D defensive rebound (1)			
11:54	2 HILDRETH C 3pt FG , jump shot missed			
11:50				2 POLITE A defensive rebound (1)
11:47				21 FLETCHER C 2pt FG outside the paint, pull up jump shot missed



**Florida St. at Wake Forest**

01/04/22 LJVM Coliseum, Winston-Salem  
2021-22 Men's Basketball

**Game Time:** 7:00 PM  
**Game Duration:** 1:57  
**Attendance:** 4,782

**Officials:** Roger Ayers, John Gaffney, Bart Lenox

Game Time	WFU	Score	Diff	FSU
11:44	20 SY K defensive rebound (1)			
11:34	31 WILLIAMS A foul drawn (2)			21 FLETCHER C foul personal (1 - 6)
11:34	Timeout media			
11:21	20 SY K foul drawn (2)			0 EVANS R foul shooting (2 - 7)
11:20	20 SY K free throw 1 - 3 missed			
11:20	offensive dead ball rebound (1)			
11:20	20 SY K free throw 2 - 3 made (9)	<b>14-11</b>	<b>3</b>	
11:20				0 EVANS R substitution out
11:20				1 WARLEY J substitution in
11:20	20 SY K free throw 3 - 3 made (10)	<b>15-11</b>	<b>4</b>	
11:20	13 WALTON D substitution out			
11:20	1 MUCIUS I substitution in			
11:09				21 FLETCHER C 3pt FG , jump shot missed
11:06	2 HILDRETH C defensive rebound (1)			
10:58	1 MUCIUS I 3pt FG , jump shot missed			
10:55	20 SY K offensive rebound (2)			
10:48	1 MUCIUS I 3pt FG second chance, jump shot made (3)	<b>18-11</b>	<b>7</b>	
10:48	31 WILLIAMS A assist (2)			
10:16				2 POLITE A 2pt FG in the paint, layup missed
10:14	20 SY K defensive rebound (3)			
09:54	1 MUCIUS I 2pt FG in the paint, hook shot missed			
09:52				10 OSBORNE M defensive rebound (2)
09:45				4 MILLS C 3pt FG , jump shot missed
09:43	31 WILLIAMS A defensive rebound (4)			
09:35	31 WILLIAMS A 2pt FG in the paint, layup missed			
09:33				10 OSBORNE M defensive rebound (3)
09:25				2 POLITE A turnover lost ball (1)
09:25				Timeout 30 Sec
09:25				21 FLETCHER C substitution out
09:25				22 BUTLER J substitution in
09:11	0 LARAVIA J foul drawn (1)			22 BUTLER J foul shooting (2 - 8)
09:11	0 LARAVIA J free throw 1 - 2 made (1)	<b>19-11</b>	<b>8</b>	
09:11	31 WILLIAMS A substitution out			
09:11	11 WHITT C substitution in			
09:11	0 LARAVIA J free throw 2 - 2 made (2)	<b>20-11</b>	<b>9</b>	
08:55				4 MILLS C 2pt FG outside the paint, jump shot missed
08:53	defensive rebound (15)			
08:53	20 SY K substitution out			
08:53	13 WALTON D substitution in			
08:27	Timeout 30 Sec			
08:27	Timeout media			
08:27	11 WHITT C substitution out			
08:27	31 WILLIAMS A substitution in			
08:21	2 HILDRETH C 3pt FG , jump shot missed			
08:18	2 HILDRETH C offensive rebound (2)			
08:12	2 HILDRETH C foul drawn (1)			4 MILLS C foul personal (1 - 9)
08:12	2 HILDRETH C 1&1 free throw 1 missed			
08:12				2 POLITE A defensive rebound (2)
07:52				1 WARLEY J 2pt FG in the paint, jump shot missed



**Florida St. at Wake Forest**

01/04/22 LJVM Coliseum, Winston-Salem  
2021-22 Men's Basketball

**Game Time:** 7:00 PM  
**Game Duration:** 1:57  
**Attendance:** 4,782

**Officials:** Roger Ayers, John Gaffney, Bart Lenox

Game Time	WFU	Score	Diff	FSU
07:50	1 MUCIUS I defensive rebound (3)			
07:44	31 WILLIAMS A turnover bad pass (2)			22 BUTLER J steal (1)
07:39				4 MILLS C 2pt FG from turnover in the paint, layup blocked
07:39	13 WALTON D block (1)			
07:35	2 HILDRETH C defensive rebound (3)			
07:32	1 MUCIUS I 3pt FG fast break, jump shot made (6)	<b>23-11</b>	<b>12</b>	
07:32	2 HILDRETH C assist (1)			
07:05				10 OSBORNE M 3pt FG , jump shot missed
07:01	13 WALTON D defensive rebound (2)			
06:48	0 LARAVIA J foul drawn (2)			4 MILLS C foul personal (2 - 10)
06:48	0 LARAVIA J free throw 1 - 2 made (3)	<b>24-11</b>	<b>13</b>	
06:48	13 WALTON D substitution out			
06:48	20 SY K substitution in			
06:48				4 MILLS C substitution out
06:48				22 BUTLER J substitution out
06:48				12 LINDNER J substitution in
06:48				21 FLETCHER C substitution in
06:48				1 WARLEY J substitution out
06:48				31 WILKES W substitution in
06:48	0 LARAVIA J free throw 2 - 2 made (4)	<b>25-11</b>	<b>14</b>	
06:32		<b>25-14</b>	<b>11</b>	21 FLETCHER C 3pt FG , jump shot made (3)
06:32				31 WILKES W assist (1)
06:00	31 WILLIAMS A 2pt FG in the paint, layup missed			
05:59	offensive rebound (20)			
05:59	0 LARAVIA J turnover bad pass (1)			12 LINDNER J steal (1)
05:55		<b>25-16</b>	<b>9</b>	21 FLETCHER C 2pt FG fast break from turnover in the paint, dunk, made (5)
05:55				12 LINDNER J assist (1)
05:47	0 LARAVIA J turnover lost ball (2)			21 FLETCHER C steal (1)
05:45	2 HILDRETH C foul drawn (2)			21 FLETCHER C foul offensive (2 - 11)
05:45				21 FLETCHER C turnover offensive (1)
05:42	2 HILDRETH C substitution out			
05:42	11 WHITT C substitution in			
05:42				12 LINDNER J substitution out
05:42				24 MCLEOD N substitution in
05:27	1 MUCIUS I 3pt FG from turnover, jump shot missed			
05:23				21 FLETCHER C defensive rebound (2)
04:55	jump ball situation			
04:55				21 FLETCHER C substitution out
04:55				1 WARLEY J substitution in
04:54				2 POLITE A 3pt FG , jump shot missed
04:52	11 WHITT C defensive rebound (3)			
04:42	31 WILLIAMS A foul drawn (3)			24 MCLEOD N foul shooting (1 - 12)
04:42	31 WILLIAMS A free throw 1 - 2 made (3)	<b>26-16</b>	<b>10</b>	
04:42	31 WILLIAMS A free throw 2 - 2 made (4)	<b>27-16</b>	<b>11</b>	
04:32	31 WILLIAMS A foul personal (2 - 3)			31 WILKES W foul drawn (1)
04:22				10 OSBORNE M 2pt FG in the paint, hook shot missed
04:19	0 LARAVIA J defensive rebound (1)			
04:15	0 LARAVIA J turnover bad pass (3)			1 WARLEY J steal (1)



**Florida St. at Wake Forest**

01/04/22 LJV Coliseum, Winston-Salem  
2021-22 Men's Basketball

**Game Time:** 7:00 PM  
**Game Duration:** 1:57  
**Attendance:** 4,782

**Officials:** Roger Ayers, John Gaffney, Bart Lenox

Game Time	WFU	Score	Diff	FSU
04:08				10 OSBORNE M 3pt FG from turnover, jump shot missed
04:06	1 MUCIUS I defensive rebound (4)			
04:00	31 WILLIAMS A 2pt FG in the paint, layup missed			
03:57				31 WILKES W defensive rebound (1)
03:54				31 WILKES W 3pt FG , jump shot missed
03:51	1 MUCIUS I defensive rebound (5)			
03:42	31 WILLIAMS A foul drawn (4)			2 POLITE A foul shooting (1 - 13)
03:42	Timeout media			
03:42	31 WILLIAMS A free throw 1 - 2 missed			
03:42	offensive dead ball rebound (2)			
03:42	31 WILLIAMS A free throw 2 - 2 made (5)	<b>28-16</b>	<b>12</b>	
03:42	31 WILLIAMS A substitution out			
03:42	13 WALTON D substitution in			
03:34	13 WALTON D foul personal (2 - 4)			2 POLITE A foul drawn (1)
03:34	13 WALTON D substitution out			
03:34	2 HILDRETH C substitution in			
03:25		<b>28-19</b>	<b>9</b>	31 WILKES W 3pt FG , jump shot made (3)
03:25				1 WARLEY J assist (1)
02:59	1 MUCIUS I 3pt FG , jump shot missed			
02:56				2 POLITE A defensive rebound (3)
02:50				31 WILKES W 3pt FG , jump shot missed
02:46	2 HILDRETH C defensive rebound (4)			
02:32	0 LARAVIA J 2pt FG in the paint, layup made (6)	<b>30-19</b>	<b>11</b>	
02:32	11 WHITT C assist (2)			
02:18	0 LARAVIA J foul personal (1 - 5)			10 OSBORNE M foul drawn (1)
02:06	2 HILDRETH C steal (1)			2 POLITE A turnover bad pass (2)
01:47	2 HILDRETH C 3pt FG from turnover, jump shot missed			
01:44				2 POLITE A defensive rebound (4)
01:34	11 WHITT C foul shooting (1 - 6)			24 MCLEOD N foul drawn (2)
01:34		<b>30-20</b>	<b>10</b>	24 MCLEOD N free throw 1 - 2 made (3)
01:34	11 WHITT C substitution out			
01:34	31 WILLIAMS A substitution in			
01:34		<b>30-21</b>	<b>9</b>	24 MCLEOD N free throw 2 - 2 made (4)
01:11	0 LARAVIA J 3pt FG , jump shot made (9)	<b>33-21</b>	<b>12</b>	
01:11	2 HILDRETH C assist (2)			
00:48				1 WARLEY J 2pt FG in the paint, layup missed
00:48				offensive rebound (13)
00:48	2 HILDRETH C foul personal (1 - 7)			24 MCLEOD N foul drawn (3)
00:48		<b>33-22</b>	<b>11</b>	24 MCLEOD N 1&1 free throw 1 made (5)
00:48				24 MCLEOD N 1&1 free throw 2 missed
00:48	20 SY K defensive rebound (4)			
00:40	31 WILLIAMS A 2pt FG in the paint, layup made (7)	<b>35-22</b>	<b>13</b>	
00:17				10 OSBORNE M 3pt FG , jump shot missed
00:13				1 WARLEY J offensive rebound (1)
00:02				31 WILKES W 3pt FG second chance, jump shot missed
00:02				2 POLITE A offensive rebound (5)
<b>END OF PERIOD</b>				
<b>WFU 35-22 FSU</b>				



**Florida St. at Wake Forest**

01/04/22 LJV Coliseum, Winston-Salem  
2021-22 Men's Basketball

Game Time: 7:00 PM  
Game Duration: 1:57  
Attendance: 4,782

Officials: Roger Ayers, John Gaffney, Bart Lenox

**Florida St. - 22**

NO.	Name	F	Min	FG			3P			FT			Rebounds			Fouls		TP	AS	TO	ST	Blocks		+/-
				M-A	M-A	M-A	OR	DR	TOT	PF	FD	BS	BA											
10	Malik Osborne	F	16:58	2-8	0-4	0-0	0	3	3	0	1	4	0	1	4	0	0	0	0	0	0	0	-7	
22	John Butler	F	06:43	0-0	0-0	0-0	0	1	1	2	0	0	0	0	0	0	0	1	0	0	0	0	0	
0	RayQuan Evans	G	05:34	1-1	0-0	0-0	0	1	1	2	1	2	0	1	2	0	0	0	0	0	0	0	1	
2	Anthony Polite	G	18:27	1-5	1-4	0-0	1	4	5	1	1	3	0	2	3	0	2	2	2	0	0	0	-10	
4	Caleb Mills	G	11:38	0-6	0-1	0-0	0	0	0	2	0	0	0	1	1	1	0	0	0	0	2	0	-10	
1	Jalen Warley		12:33	0-3	0-0	0-0	1	0	1	0	0	0	0	1	0	1	0	1	0	0	0	0	-18	
24	Naheem McLeod		08:44	0-0	0-0	5-6	0	0	0	1	3	5	0	0	0	0	0	0	1	0	0	0	-10	
31	Wyatt Wilkes		09:50	1-4	1-4	0-0	0	1	1	1	1	3	1	1	3	1	1	0	0	0	0	0	-6	
35	Matthew Cleveland		01:33	0-0	0-0	0-0	0	0	0	2	0	0	0	0	0	0	0	1	0	0	0	0	-3	
21	Cam'Ron Fletcher		06:54	2-4	1-2	0-0	0	2	2	2	0	5	0	1	5	0	1	1	0	0	0	0	-6	
12	Justin Lindner		01:06	0-0	0-0	0-0	0	0	0	0	0	0	0	0	0	1	0	1	0	0	0	0	4	
Team							1	0	1			0			0									
<b>Totals</b>				7-31	3-15	5-6	3	12	15	13	7	22	4	5	7	1	2	1	2				-13	

Shooting By Period		
1st FG%	7-31	22.6%
3PT%	3-15	20.0%
FT%	5-6	83.3%
GM FG%	7-31	22.6%
3PT%	3-15	20.0%
FT%	5-6	83.3%

Dead Ball Rebounds: 0, 0

Technical Fouls::NONE

**Wake Forest - 35**

NO.	Name	F	Min	FG			3P			FT			Rebounds			Fouls		TP	AS	TO	ST	Blocks		+/-
				M-A	M-A	M-A	OR	DR	TOT	PF	FD	BS	BA											
1	Isaiah Mucius	F	18:28	2-7	2-6	0-0	0	5	5	0	1	6	0	1	6	0	1	0	0	0	0	0	9	
13	Dallas Walton	C	08:50	0-2	0-1	3-4	0	2	2	2	2	3	0	0	0	0	0	0	1	1	1	1	7	
0	Jake LaRavia	G	20:00	2-2	1-1	4-4	0	1	1	1	2	9	1	3	0	1	0	1	0	0	0	0	13	
11	Carter Whitt	G	10:26	0-0	0-0	0-0	0	3	3	1	0	0	2	1	0	2	1	0	0	0	0	0	0	
31	Alondes Williams	G	17:08	2-6	0-1	3-4	1	3	4	2	4	7	2	2	0	2	0	0	0	0	0	0	14	
20	Khadim Sy		14:24	3-3	1-1	3-4	1	3	4	0	2	10	0	0	0	0	0	0	0	0	0	0	12	
2	Cameron Hildreth		10:44	0-3	0-3	0-1	1	3	4	1	2	0	2	0	1	0	1	0	0	0	0	0	10	
Team							1	2	3			0			2									
<b>Totals</b>				9-23	4-13	13-17	4	22	26	7	13	35	7	9	1	2	1	2	1	13				

Shooting By Period		
1st FG%	9-23	39.1%
3PT%	4-13	30.8%
FT%	13-17	76.5%
GM FG%	9-23	39.1%
3PT%	4-13	30.8%
FT%	13-17	76.5%

Dead Ball Rebounds: 2, 0

Technical Fouls::NONE

	FSU	WFU
Biggest lead	6 (1st 18:04)	14 (1st 6:48)
Best Scoring Run	6(1st 18:04)	17(1st 6:48)
Lead Changes	1	
Times Tied	1	
Time with Lead	04:54	12:35

Points from	FSU	WFU
Turnovers	6	2
Paint	6	10
Second Chance	1	3
Fast Breaks	4	5
Bench	13	10

	Period by Period Scoring		
	1st	2nd	TOT
FSU	22	32	54
WFU	35	41	76



**Florida St. at Wake Forest**

01/04/22 LJV Coliseum, Winston-Salem  
2021-22 Men's Basketball

**Game Time:** 7:00 PM  
**Game Duration:** 1:57  
**Attendance:** 4,782

**Officials:** Roger Ayers, John Gaffney, Bart Lenox

**Period 2**

**Quarter Starters:**

<b>WFU</b>	0 LaRavia J	1 Mucius I	11 Whitt C	13 Walton D	31 Williams A
<b>FSU</b>	0 Evans R	2 Polite A	4 Mills C	10 Osborne M	22 Butler J

Game Time	WFU	Score	Diff	FSU
20:00	2 HILDRETH C substitution out			
20:00	20 SY K substitution out			
20:00	11 WHITT C substitution in			
20:00	13 WALTON D substitution in			
20:00				1 WARLEY J substitution out
20:00				24 MCLEOD N substitution out
20:00				31 WILKES W substitution out
20:00				0 EVANS R substitution in
20:00				4 MILLS C substitution in
20:00				22 BUTLER J substitution in
19:29	0 LARAVIA J 2pt FG outside the paint, turnaround jump shot made (11)	<b>37-22</b>	<b>15</b>	
19:11	0 LARAVIA J foul shooting (2 - 1)			10 OSBORNE M foul drawn (2)
19:11		<b>37-23</b>	<b>14</b>	10 OSBORNE M free throw 1 - 2 made (5)
19:11		<b>37-24</b>	<b>13</b>	10 OSBORNE M free throw 2 - 2 made (6)
19:05	13 WALTON D 2pt FG fast break in the paint, layup made (5)	<b>39-24</b>	<b>15</b>	
19:05	0 LARAVIA J assist (2)			
18:36	13 WALTON D foul personal (3 - 2)			4 MILLS C foul drawn (1)
18:36	13 WALTON D substitution out			
18:36	20 SY K substitution in			
18:28				2 POLITE A 3pt FG , jump shot missed
18:24				10 OSBORNE M offensive rebound (4)
18:20				4 MILLS C turnover travel (2)
18:20				2 POLITE A substitution out
18:20				35 CLEVELAND M substitution in
17:59	31 WILLIAMS A 2pt FG from turnover in the paint, layup missed			
17:54	31 WILLIAMS A offensive rebound (5)			
17:54	31 WILLIAMS A 2pt FG from turnover second chance in the paint, layup made (9)	<b>41-24</b>	<b>17</b>	
17:38				35 CLEVELAND M 2pt FG outside the paint, jump shot missed
17:36	20 SY K defensive rebound (5)			
17:19	31 WILLIAMS A 2pt FG in the paint, layup made (11)	<b>43-24</b>	<b>19</b>	
17:19	0 LARAVIA J assist (3)			
16:59	20 SY K steal (1)			35 CLEVELAND M turnover lost ball (1)
16:53	31 WILLIAMS A 2pt FG from turnover in the paint, layup missed			
16:51	0 LARAVIA J offensive rebound (2)			
16:49	1 MUCIUS I 3pt FG from turnover second chance, jump shot made (9)	<b>46-24</b>	<b>22</b>	
16:49	0 LARAVIA J assist (4)			
16:40				Timeout 30 Sec
16:40				Timeout media
16:28				4 MILLS C 2pt FG outside the paint, jump shot missed
16:26				35 CLEVELAND M offensive rebound (1)





**Florida St. at Wake Forest**

01/04/22 LJVM Coliseum, Winston-Salem  
2021-22 Men's Basketball

**Game Time:** 7:00 PM  
**Game Duration:** 1:57  
**Attendance:** 4,782

**Officials:** Roger Ayers, John Gaffney, Bart Lenox

Game Time	WFU	Score	Diff	FSU
16:25		<b>46-26</b>	<b>20</b>	35 CLEVELAND M 2pt FG second chance in the paint, layup made (2)
16:13	31 WILLIAMS A turnover lost ball (3)			0 EVANS R steal (1)
16:05				4 MILLS C 3pt FG from turnover, jump shot missed
16:01	1 MUCIUS I defensive rebound (6)			
15:53	0 LARAVIA J 2pt FG in the paint, layup blocked			
15:53				0 EVANS R block (1)
15:49				0 EVANS R defensive rebound (2)
15:45		<b>46-28</b>	<b>18</b>	0 EVANS R 2pt FG outside the paint, jump shot made (4)
15:27	31 WILLIAMS A foul drawn (5)			4 MILLS C foul shooting (3 - 1)
15:27	Timeout media			
15:27	11 WHITT C substitution out			
15:27	2 HILDRETH C substitution in			
15:27				0 EVANS R substitution out
15:27				22 BUTLER J substitution out
15:27				1 WARLEY J substitution in
15:27				21 FLETCHER C substitution in
15:27	31 WILLIAMS A free throw 1 - 2 made (12)	<b>47-28</b>	<b>19</b>	
15:27	31 WILLIAMS A free throw 2 - 2 made (13)	<b>48-28</b>	<b>20</b>	
15:12				4 MILLS C 2pt FG in the paint, floating jump shot missed
15:09	2 HILDRETH C defensive rebound (5)			
15:04	2 HILDRETH C 2pt FG in the paint, layup missed			
15:02	20 SY K offensive rebound (6)			
15:01	20 SY K turnover lost ball (1)			4 MILLS C steal (1)
14:49				21 FLETCHER C 2pt FG from turnover in the paint, jump shot missed
14:45	1 MUCIUS I defensive rebound (7)			
14:41	31 WILLIAMS A 2pt FG fast break in the paint, dunk, made (15)	<b>50-28</b>	<b>22</b>	
14:41	0 LARAVIA J assist (5)			
14:18	1 MUCIUS I substitution out			
14:18	13 WALTON D substitution in			
14:18				1 WARLEY J substitution out
14:18				0 EVANS R substitution in
14:18				4 MILLS C substitution out
14:18				1 WARLEY J substitution in
14:13	20 SY K foul shooting (1 - 3)			35 CLEVELAND M foul drawn (1)
14:13				35 CLEVELAND M free throw 1 - 2 missed
14:13				offensive dead ball rebound (1)
14:13				10 OSBORNE M substitution out
14:13				24 MCLEOD N substitution in
14:13		<b>50-29</b>	<b>21</b>	35 CLEVELAND M free throw 2 - 2 made (3)
13:58	2 HILDRETH C 2pt FG in the paint, layup blocked			
13:58				1 WARLEY J block (1)
13:53				35 CLEVELAND M defensive rebound (2)
13:51				21 FLETCHER C 2pt FG in the paint, layup blocked
13:51	13 WALTON D block (2)			
13:47				24 MCLEOD N offensive rebound (1)
13:47				24 MCLEOD N 2pt FG second chance in the paint, layup missed
13:44	0 LARAVIA J defensive rebound (3)			



**Florida St. at Wake Forest**

01/04/22 LJVM Coliseum, Winston-Salem  
2021-22 Men's Basketball

**Game Time:** 7:00 PM  
**Game Duration:** 1:57  
**Attendance:** 4,782

**Officials:** Roger Ayers, John Gaffney, Bart Lenox

Game Time	WFU	Score	Diff	FSU
13:30	31 WILLIAMS A 2pt FG in the paint, jump shot made (17)	<b>52-29</b>	<b>23</b>	
13:30	31 WILLIAMS A foul drawn (6)			1 WARLEY J foul shooting (1 - 2)
13:30	31 WILLIAMS A free throw 1 - 1 made (18)	<b>53-29</b>	<b>24</b>	
13:15				35 CLEVELAND M 2pt FG in the paint, layup blocked
13:15	13 WALTON D block (3)			
13:12	0 LARAVIA J defensive rebound (4)			
13:09	31 WILLIAMS A turnover bad pass (4)			21 FLETCHER C steal (2)
13:04		<b>53-31</b>	<b>22</b>	35 CLEVELAND M 2pt FG fast break from turnover in the paint, layup made (5)
12:50	20 SY K 3pt FG , jump shot missed			
12:47				0 EVANS R defensive rebound (3)
12:44	20 SY K foul shooting (2 - 4)			35 CLEVELAND M foul drawn (2)
12:44		<b>53-32</b>	<b>21</b>	35 CLEVELAND M free throw fast break 1 - 2 made (6)
12:44				35 CLEVELAND M free throw fast break 2 - 2 missed
12:42	0 LARAVIA J defensive rebound (5)			
12:33	2 HILDRETH C 2pt FG in the paint, driving layup made (2)	<b>55-32</b>	<b>23</b>	
12:17				21 FLETCHER C 2pt FG outside the paint, jump shot missed
12:13	13 WALTON D defensive rebound (3)			
12:09				1 WARLEY J substitution out
12:09				21 FLETCHER C substitution out
12:09				4 MILLS C substitution in
12:09				22 BUTLER J substitution in
12:09				24 MCLEOD N substitution out
12:09				10 OSBORNE M substitution in
12:02	13 WALTON D turnover (1)			
12:02	31 WILLIAMS A substitution out			
12:02	11 WHITT C substitution in			
11:55		<b>55-34</b>	<b>21</b>	0 EVANS R 2pt FG from turnover in the paint, driving layup made (6)
11:38	13 WALTON D foul drawn (3)			35 CLEVELAND M foul personal (3 - 3)
11:38	Timeout media			
11:37	0 LARAVIA J turnover bad pass (4)			22 BUTLER J steal (2)
11:30				22 BUTLER J 3pt FG from turnover, jump shot missed
11:28	13 WALTON D defensive rebound (4)			
11:15	13 WALTON D turnover travel (2)			
11:04				35 CLEVELAND M 2pt FG from turnover in the paint, jump shot missed
11:02	20 SY K defensive rebound (7)			
10:45	20 SY K 2pt FG in the paint, dunk, made (12)	<b>57-34</b>	<b>23</b>	
10:45	13 WALTON D assist (1)			
10:25				0 EVANS R 3pt FG , jump shot missed
10:23	20 SY K defensive rebound (8)			
10:10	0 LARAVIA J foul drawn (3)			22 BUTLER J foul shooting (3 - 4)
10:10	0 LARAVIA J free throw 1 - 2 made (12)	<b>58-34</b>	<b>24</b>	
10:10	2 HILDRETH C substitution out			
10:10	31 WILLIAMS A substitution in			
10:10	0 LARAVIA J free throw 2 - 2 made (13)	<b>59-34</b>	<b>25</b>	
10:08				Timeout 30 Sec
10:02	11 WHITT C foul shooting (2 - 5)			35 CLEVELAND M foul drawn (3)
10:02		<b>59-35</b>	<b>24</b>	35 CLEVELAND M free throw fast break 1 - 2 made (7)



**Florida St. at Wake Forest**

01/04/22 LJV Coliseum, Winston-Salem  
2021-22 Men's Basketball

**Game Time:** 7:00 PM  
**Game Duration:** 1:57  
**Attendance:** 4,782

**Officials:** Roger Ayers, John Gaffney, Bart Lenox

Game Time	WFU	Score	Diff	FSU
10:02				22 BUTLER J substitution out
10:02				2 POLITE A substitution in
10:02		<b>59-36</b>	<b>23</b>	35 CLEVELAND M free throw fast break 2 - 2 made (8)
09:55	0 LARAVIA J 2pt FG fast break in the paint, layup made (15)	<b>61-36</b>	<b>25</b>	
09:55	0 LARAVIA J foul drawn (4)			4 MILLS C foul shooting (4 - 5)
09:55	0 LARAVIA J free throw fast break 1 - 1 missed			
09:55				10 OSBORNE M defensive rebound (5)
09:44	31 WILLIAMS A foul shooting (3 - 6)			4 MILLS C foul drawn (2)
09:44		<b>61-37</b>	<b>24</b>	4 MILLS C free throw 1 - 2 made (1)
09:44		<b>61-38</b>	<b>23</b>	4 MILLS C free throw 2 - 2 made (2)
09:22	20 SY K turnover bad pass (2)			0 EVANS R steal (2)
09:17		<b>61-40</b>	<b>21</b>	35 CLEVELAND M 2pt FG fast break from turnover in the paint, layup made (10)
09:17				0 EVANS R assist (1)
09:17	11 WHITT C foul shooting (3 - 7)			35 CLEVELAND M foul drawn (4)
09:17	20 SY K substitution out			
09:17	1 MUCIUS I substitution in			
09:17				0 EVANS R substitution out
09:17				21 FLETCHER C substitution in
09:17		<b>61-41</b>	<b>20</b>	35 CLEVELAND M free throw fast break 1 - 1 made (11)
09:07	1 MUCIUS I 3pt FG , jump shot missed			
09:04	13 WALTON D offensive rebound (5)			
09:00	0 LARAVIA J turnover bad pass (5)			35 CLEVELAND M steal (2)
08:55				2 POLITE A 3pt FG from turnover, jump shot missed
08:52				21 FLETCHER C offensive rebound (3)
08:46	31 WILLIAMS A foul shooting (4 - 8)			4 MILLS C foul drawn (3)
08:46		<b>61-42</b>	<b>19</b>	4 MILLS C free throw 1 - 2 made (3)
08:46	31 WILLIAMS A substitution out			
08:46	2 HILDRETH C substitution in			
08:43		<b>61-43</b>	<b>18</b>	4 MILLS C free throw 2 - 2 made (4)
08:32	11 WHITT C 2pt FG outside the paint, jump shot missed			
08:29				10 OSBORNE M defensive rebound (6)
08:26	13 WALTON D foul personal (4 - 9)			4 MILLS C foul drawn (4)
08:26	13 WALTON D substitution out			
08:26	20 SY K substitution in			
08:26		<b>61-44</b>	<b>17</b>	4 MILLS C 1&1 free throw 1 made (5)
08:26		<b>61-45</b>	<b>16</b>	4 MILLS C 1&1 free throw 2 made (6)
08:24	0 LARAVIA J turnover bad pass (6)			2 POLITE A steal (3)
08:20				2 POLITE A 2pt FG from turnover in the paint, layup missed
08:18	1 MUCIUS I defensive rebound (8)			
07:47	11 WHITT C turnover bad pass (2)			35 CLEVELAND M steal (3)
07:35	2 HILDRETH C foul drawn (3)			35 CLEVELAND M foul offensive (4 - 6)
07:35				35 CLEVELAND M turnover offensive (2)
07:35	Timeout media			
07:22	0 LARAVIA J 2pt FG from turnover in the paint, layup made (17)	<b>63-45</b>	<b>18</b>	
07:22	2 HILDRETH C assist (3)			
07:22	0 LARAVIA J foul drawn (5)			2 POLITE A foul shooting (2 - 7)
07:22				21 FLETCHER C substitution out
07:22				0 EVANS R substitution in



**Florida St. at Wake Forest**

01/04/22 LJVM Coliseum, Winston-Salem  
2021-22 Men's Basketball

**Game Time:** 7:00 PM  
**Game Duration:** 1:57  
**Attendance:** 4,782

**Officials:** Roger Ayers, John Gaffney, Bart Lenox

Game Time	WFU	Score	Diff	FSU
07:22	0 LARAVIA J free throw 1 - 1 made (18)	<b>64-45</b>	<b>19</b>	
07:04				0 EVANS R 3pt FG , jump shot missed
07:00	0 LARAVIA J defensive rebound (6)			
06:52	0 LARAVIA J turnover bad pass (7)			
06:38				4 MILLS C 2pt FG from turnover outside the paint, jump shot missed
06:36	20 SY K defensive rebound (9)			
06:21	0 LARAVIA J turnover bad pass (8)			10 OSBORNE M steal (1)
06:15				35 CLEVELAND M 2pt FG from turnover in the paint, layup missed
06:13	20 SY K defensive rebound (10)			
05:44	1 MUCIUS I 3pt FG , jump shot missed			
05:43				4 MILLS C defensive rebound (1)
05:43				0 EVANS R substitution out
05:43				1 WARLEY J substitution in
05:31				35 CLEVELAND M 2pt FG outside the paint, jump shot missed
05:26	11 WHITT C defensive rebound (4)			
05:13	11 WHITT C 2pt FG outside the paint, jump shot missed			
05:10	0 LARAVIA J offensive rebound (7)			
05:08	0 LARAVIA J 2pt FG second chance in the paint, driving layup made (20)	<b>66-45</b>	<b>21</b>	
05:08	0 LARAVIA J foul drawn (6)			1 WARLEY J foul shooting (2 - 8)
05:08	0 LARAVIA J free throw 1 - 1 missed			
05:08				10 OSBORNE M defensive rebound (7)
04:56	2 HILDRETH C steal (2)			35 CLEVELAND M turnover lost ball (3)
04:44	11 WHITT C 3pt FG from turnover, jump shot missed			
04:40				10 OSBORNE M defensive rebound (8)
04:36	11 WHITT C steal (1)			2 POLITE A turnover lost ball (3)
04:29	11 WHITT C 2pt FG from turnover in the paint, layup blocked			
04:29				2 POLITE A block (1)
04:29	offensive rebound (48)			
04:29				10 OSBORNE M substitution out
04:29				15 BALLARD Q substitution in
04:13	0 LARAVIA J foul drawn (7)			2 POLITE A foul shooting (3 - 9)
04:13	0 LARAVIA J free throw 1 - 2 made (21)	<b>67-45</b>	<b>22</b>	
04:13	0 LARAVIA J free throw 2 - 2 made (22)	<b>68-45</b>	<b>23</b>	
03:59		<b>68-47</b>	<b>21</b>	4 MILLS C 2pt FG in the paint, floating jump shot made (8)
03:35	0 LARAVIA J 2pt FG in the paint, hook shot missed			
03:33				15 BALLARD Q defensive rebound (1)
03:29				4 MILLS C 3pt FG , jump shot missed
03:25	11 WHITT C defensive rebound (5)			
03:07	2 HILDRETH C 2pt FG in the paint, layup blocked			
03:07				15 BALLARD Q block (1)
03:07	offensive rebound (50)			
03:06	Timeout media			
03:06	2 HILDRETH C substitution out			
03:06	11 WHITT C substitution out			
03:06	13 WALTON D substitution in			
03:06	31 WILLIAMS A substitution in			
03:06				15 BALLARD Q substitution out



**Florida St. at Wake Forest**

01/04/22 LJV Coliseum, Winston-Salem  
2021-22 Men's Basketball

**Game Time:** 7:00 PM  
**Game Duration:** 1:57  
**Attendance:** 4,782

**Officials:** Roger Ayers, John Gaffney, Bart Lenox

Game Time	WFU	Score	Diff	FSU
03:06				24 MCLEOD N substitution in
02:57	0 LARAVIA J 3pt FG second chance, jump shot missed			
02:55				4 MILLS C defensive rebound (2)
02:52	0 LARAVIA J foul personal (3 - 10)			35 CLEVELAND M foul drawn (5)
02:52				35 CLEVELAND M free throw fast break 1 - 2 missed
02:52				offensive dead ball rebound (2)
02:52				1 WARLEY J substitution out
02:52				2 POLITE A substitution out
02:52				0 EVANS R substitution in
02:52				31 WILKES W substitution in
02:52		<b>68-48</b>	<b>20</b>	35 CLEVELAND M free throw fast break 2 - 2 made (12)
02:38	31 WILLIAMS A 2pt FG in the paint, layup made (20)	<b>70-48</b>	<b>22</b>	
02:21		<b>70-51</b>	<b>19</b>	31 WILKES W 3pt FG , jump shot made (6)
02:21				4 MILLS C assist (2)
02:05	20 SY K 2pt FG in the paint, layup made (14)	<b>72-51</b>	<b>21</b>	
02:05	31 WILLIAMS A assist (3)			
01:57				0 EVANS R 2pt FG in the paint, layup missed
01:55	31 WILLIAMS A defensive rebound (6)			
01:51	20 SY K 2pt FG fast break in the paint, layup made (16)	<b>74-51</b>	<b>23</b>	
01:51	31 WILLIAMS A assist (4)			
01:50	13 WALTON D substitution out			
01:50	2 HILDRETH C substitution in			
01:50				24 MCLEOD N substitution out
01:50				10 OSBORNE M substitution in
01:40		<b>74-53</b>	<b>21</b>	4 MILLS C 2pt FG in the paint, driving layup made (10)
01:29	31 WILLIAMS A turnover lost ball (5)			
01:29	0 LARAVIA J substitution out			
01:29	1 MUCIUS I substitution out			
01:29	20 SY K substitution out			
01:29	31 WILLIAMS A substitution out			
01:29	11 WHITT C substitution in			
01:29	23 TAYLOR L substitution in			
01:29	25 MCCRAY R substitution in			
01:29	33 MARSH M substitution in			
01:19				0 EVANS R 3pt FG from turnover, jump shot missed
01:17	11 WHITT C defensive rebound (6)			
01:06	25 MCCRAY R 2pt FG in the paint, layup made (2)	<b>76-53</b>	<b>23</b>	
00:53	23 TAYLOR L foul shooting (1 - 11)			35 CLEVELAND M foul drawn (6)
00:53				35 CLEVELAND M free throw 1 - 2 missed
00:53				offensive dead ball rebound (3)
00:53		<b>76-54</b>	<b>22</b>	35 CLEVELAND M free throw 2 - 2 made (13)
00:31	23 TAYLOR L 2pt FG in the paint, hook shot missed			
00:29				31 WILKES W defensive rebound (2)
00:23				0 EVANS R 3pt FG , jump shot missed
00:20	25 MCCRAY R defensive rebound (1)			
<b>END OF GAME</b>				
<b>WFU 76-54 FSU</b>				



**Florida St. at Wake Forest**

01/04/22 LJV Coliseum, Winston-Salem  
2021-22 Men's Basketball

Game Time: 7:00 PM  
Game Duration: 1:57  
Attendance: 4,782

Officials: Roger Ayers, John Gaffney, Bart Lenox

**Florida St. - 32**

NO.	Name	Min	FG			Rebounds			Fouls		TP	AS	TO	ST	Blocks		+/-
			M-A	M-A	M-A	OR	DR	TOT	PF	FD					BS	BA	
10	Malik Osborne	F 15:17	0-0	0-0	2-2	1	4	5	0	1	2	0	0	1	0	0	-6
22	John Butler	F 06:40	0-1	0-1	0-0	0	0	0	1	0	0	0	0	1	0	0	-6
0	RayQuan Evans	G 14:05	2-7	0-4	0-0	0	2	2	0	0	4	1	0	2	1	0	-6
2	Anthony Polite	G 08:50	0-3	0-2	0-0	0	0	0	2	0	0	0	1	1	1	0	1
4	Caleb Mills	G 17:51	2-7	0-2	6-6	0	2	2	2	4	10	1	1	1	0	0	-8
35	Matthew Cleveland	18:20	3-8	0-0	7-11	1	1	2	2	6	13	0	3	2	0	1	-7
1	Jalen Warley	06:09	0-0	0-0	0-0	0	0	0	2	0	0	0	0	0	1	0	-7
21	Cam'Ron Fletcher	05:13	0-3	0-0	0-0	1	0	1	0	0	0	0	0	1	0	1	-2
24	Naheem McLeod	03:20	0-1	0-0	0-0	1	0	1	0	0	0	0	0	0	0	0	-3
15	Quincy Ballard	01:23	0-0	0-0	0-0	0	1	1	0	0	0	0	0	0	1	0	0
31	Wyatt Wilkes	02:52	1-1	1-1	0-0	0	1	1	0	0	3	0	0	0	0	0	-1
Team						0	0	0			0		0				
<b>Totals</b>			8-31	1-10	15-19	4	11	15	9	11	32	2	5	9	4	2	-9

Shooting By Period		
2 <sup>nd</sup> FG%	8-31	25.8%
3PT%	1-10	10.0%
FT%	15-19	78.9%
GM FG%	8-31	25.8%
3PT%	1-10	10.0%
FT%	15-19	78.9%

Dead Ball Rebounds: 3, 0

Technical Fouls::NONE

**Wake Forest - 41**

NO.	Name	Min	FG			Rebounds			Fouls		TP	AS	TO	ST	Blocks		+/-
			M-A	M-A	M-A	OR	DR	TOT	PF	FD					BS	BA	
1	Isaiah Mucius	F 13:30	1-3	1-3	0-0	0	3	3	0	0	3	0	0	0	0	0	9
13	Dallas Walton	C 08:32	1-1	0-0	0-0	1	2	3	2	1	2	1	2	0	2	0	0
0	Jake LaRavia	G 18:31	4-7	0-1	5-7	2	4	6	2	5	13	4	5	0	0	1	8
11	Carter Whitt	G 14:58	0-4	0-1	0-0	0	3	3	2	0	0	0	1	1	0	1	4
31	Alondes Williams	G 10:59	5-7	0-0	3-3	1	1	2	2	2	13	2	3	0	0	0	5
20	Khadim Sy	16:16	3-4	0-1	0-0	1	5	6	2	0	6	0	2	1	0	0	9
2	Cameron Hildreth	12:47	1-4	0-0	0-0	0	1	1	0	1	2	1	0	1	0	2	7
23	Lucas Taylor	01:29	0-1	0-0	0-0	0	0	0	1	0	0	0	0	0	0	0	1
25	Robert McCray	01:29	1-1	0-0	0-0	0	1	1	0	0	2	0	0	0	0	0	1
33	Matthew Marsh	01:29	0-0	0-0	0-0	0	0	0	0	0	0	0	0	0	0	0	1
Team						2	0	2			0		0				
<b>Totals</b>			16-32	1-6	8-10	7	20	27	11	9	41	8	13	3	2	4	9

Shooting By Period		
2 <sup>nd</sup> FG%	16-32	50.0%
3PT%	1-6	16.7%
FT%	8-10	80%
GM FG%	16-32	50.0%
3PT%	1-6	16.7%
FT%	8-10	80.0%

Dead Ball Rebounds: 0, 0

Technical Fouls::NONE

	FSU	WFU
Biggest lead	0 (1 <sup>st</sup> 20:00)	25 (2 <sup>nd</sup> 10:10)
Best Scoring Run	9(2 <sup>nd</sup> 8:26)	9(2 <sup>nd</sup> 16:49)
Lead Changes	0	
Times Tied	0	
Time with Lead	00:00	19:29

Points from	FSU	WFU
Turnovers	9	10
Paint	12	28
Second Chance	4	9
Fast Breaks	11	8
Bench	16	10

	Period by Period Scoring		
	1st	2nd	TOT
FSU	22	32	54
WFU	35	41	76

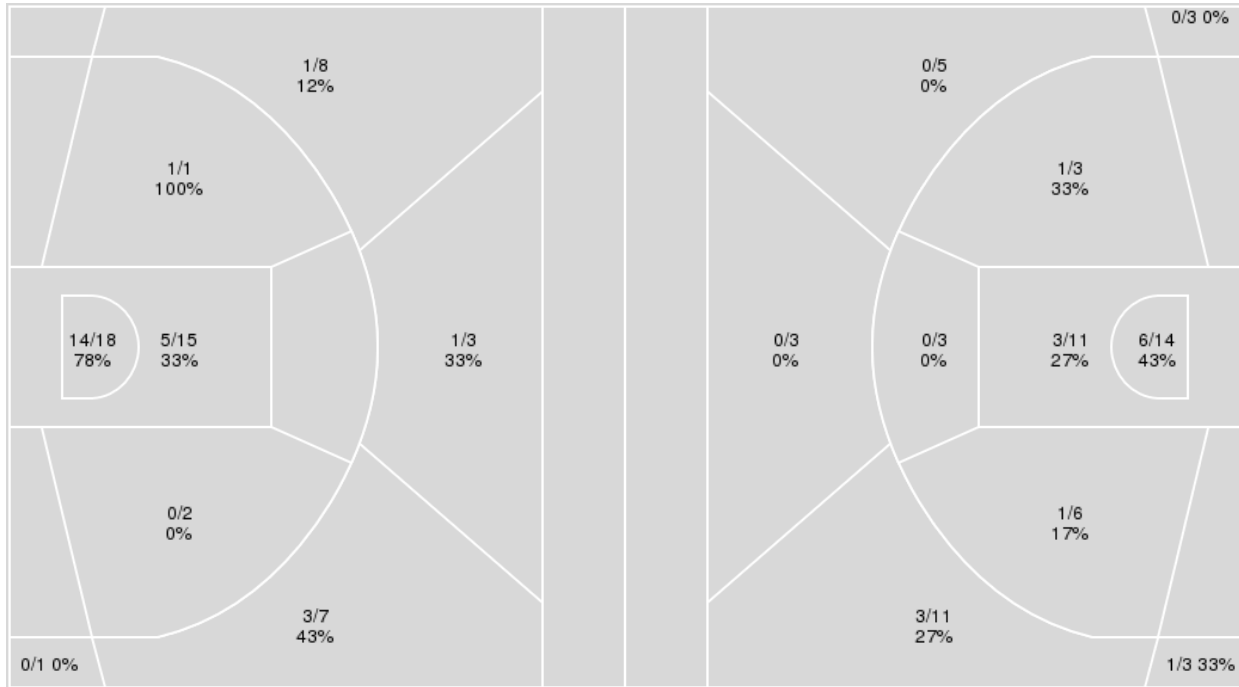


**Officials:** Roger Ayers, John Gaffney, Bart Lenox

{ Players => 0, 1, 2, 4, 10, 11, 13, 20, 23, 25, 31, 33, 40, 44, 45, 51, 52, { Players => All; } FG Types => All; Results => All; 55; } FG Types => All; Results => All;

**Wake Forest**

**Florida St.**



Wake Forest	M/A	%
Field Goals	25/55	45
2 Points	20/36	56
3 Points	5/19	26
Free Throws	21/27	78

Florida St.	M/A	%
Field Goals	15/62	24
2 Points	11/37	30
3 Points	4/25	16
Free Throws	20/25	80



**Florida St. at Wake Forest**

01/04/22 LJVM Coliseum, Winston-Salem  
2021-22 Men's Basketball

**Game Time:** 7:00 PM  
**Game Duration:** 1:57  
**Attendance:** 4,782

**Officials:** Roger Ayers, John Gaffney, Bart Lenox

**Florida St.**

No	Name	Mins		Score		Points Diff		Points per Min		Assists		Rebounds		Steals		Turnovers	
		On	Off	On	Off	On	Off	On	Off	On	Off	On	Off	On	Off	On	Off
0	RayQuan Evans	19:39	20:21	31 - 36	23 - 40	-5	-17	1.58	1.13	2	4	13	17	6	10	3	7
1	Jalen Warley	18:42	21:18	17 - 42	37 - 34	-25	3	0.91	1.74	2	4	17	13	6	10	5	5
2	Anthony Polite	27:17	12:43	34 - 43	20 - 33	-9	-13	1.25	1.57	5	1	24	6	11	5	8	2
4	Caleb Mills	29:29	10:31	39 - 57	15 - 19	-18	-4	1.32	1.43	3	3	19	11	12	4	8	2
10	Malik Osborne	32:15	07:45	42 - 55	12 - 21	-13	-9	1.30	1.55	5	1	24	6	14	2	9	1
12	Justin Lindner	01:06	38:54	5 - 1	49 - 75	4	-26	4.55	1.26	2	4	0	30	2	14	1	9
15	Quincy Ballard	01:23	38:37	2 - 2	52 - 74	0	-22	1.45	1.35	0	6	1	29	0	16	0	10
21	Cam'Ron Fletcher	12:07	27:53	14 - 22	40 - 54	-8	-14	1.16	1.43	2	4	10	20	7	9	3	7
22	John Butler	13:23	26:37	18 - 24	36 - 52	-6	-16	1.34	1.35	1	5	7	23	5	11	3	7
24	Naheem McLeod	12:04	27:56	16 - 29	38 - 47	-13	-9	1.33	1.36	2	4	12	18	3	13	2	8
31	Wyatt Wilkes	12:42	27:18	20 - 27	34 - 49	-7	-15	1.57	1.25	4	2	9	21	4	12	3	7
35	Matthew Cleveland	19:53	20:07	32 - 42	22 - 34	-10	-12	1.61	1.09	2	4	14	16	10	6	5	5

**Wake Forest**

No	Name	Mins		Score		Points Diff		Points per Min		Assists		Rebounds		Steals		Turnovers	
		On	Off	On	Off	On	Off	On	Off	On	Off	On	Off	On	Off	On	Off
0	Jake LaRavia	38:31	01:29	74 - 53	2 - 1	21	1	1.92	1.35	15	0	51	2	4	0	22	0
1	Isaiah Mucius	31:58	08:02	59 - 41	17 - 13	18	4	1.85	2.12	13	2	41	12	4	0	17	5
2	Cameron Hildreth	23:31	16:29	42 - 25	34 - 29	17	5	1.79	2.06	8	7	36	17	3	1	13	9
11	Carter Whitt	25:24	14:36	40 - 36	36 - 18	4	18	1.57	2.47	7	8	29	24	4	0	14	8
13	Dallas Walton	17:22	22:38	35 - 28	41 - 26	7	15	2.02	1.81	7	8	21	32	0	4	10	12
20	Khadim Sy	30:40	09:20	63 - 42	13 - 12	21	1	2.05	1.39	13	2	44	9	4	0	18	4
23	Lucas Taylor	01:29	38:31	2 - 1	74 - 53	1	21	1.35	1.92	0	15	2	51	0	4	0	22
25	Robert McCray	01:29	38:31	2 - 1	74 - 53	1	21	1.35	1.92	0	15	2	51	0	4	0	22
31	Alondes Williams	28:07	11:53	61 - 42	15 - 12	19	3	2.17	1.26	12	3	37	16	1	3	16	6
33	Matthew Marsh	01:29	38:31	2 - 1	74 - 53	1	21	1.35	1.92	0	15	2	51	0	4	0	22

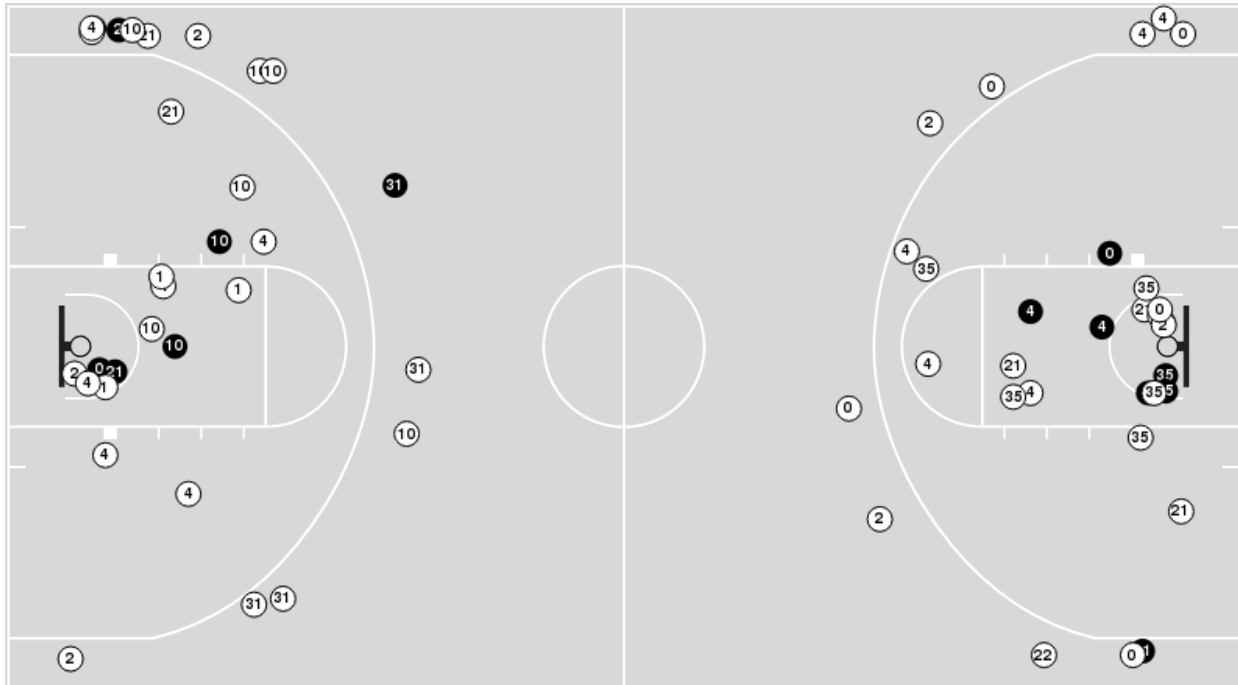




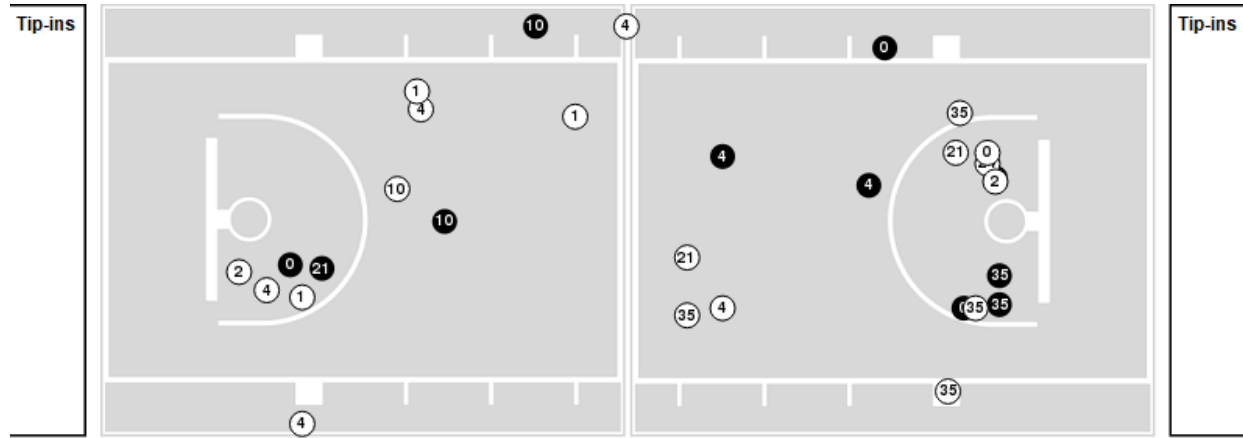
**Officials:** Roger Ayers, John Gaffney, Bart Lenox

Players => AllFG Types=>AllResults=>All  
**Florida St.**

**All Field Goals**



**Blow Up Chart**



● Made    ○ Missed    N - Player Number

Florida St.	M/A	%
Field Goals	15/62	24
2 Points	11/37	30
3 Points	4/25	16
Free Throws	20/25	80

Florida St.	M/A	%
Points in the Paint	18 (9 / 25)	36
Fast Break Points	15 (11/13)	85
Second Chance Points	5 (4/7)	57
Effective FG%	27	

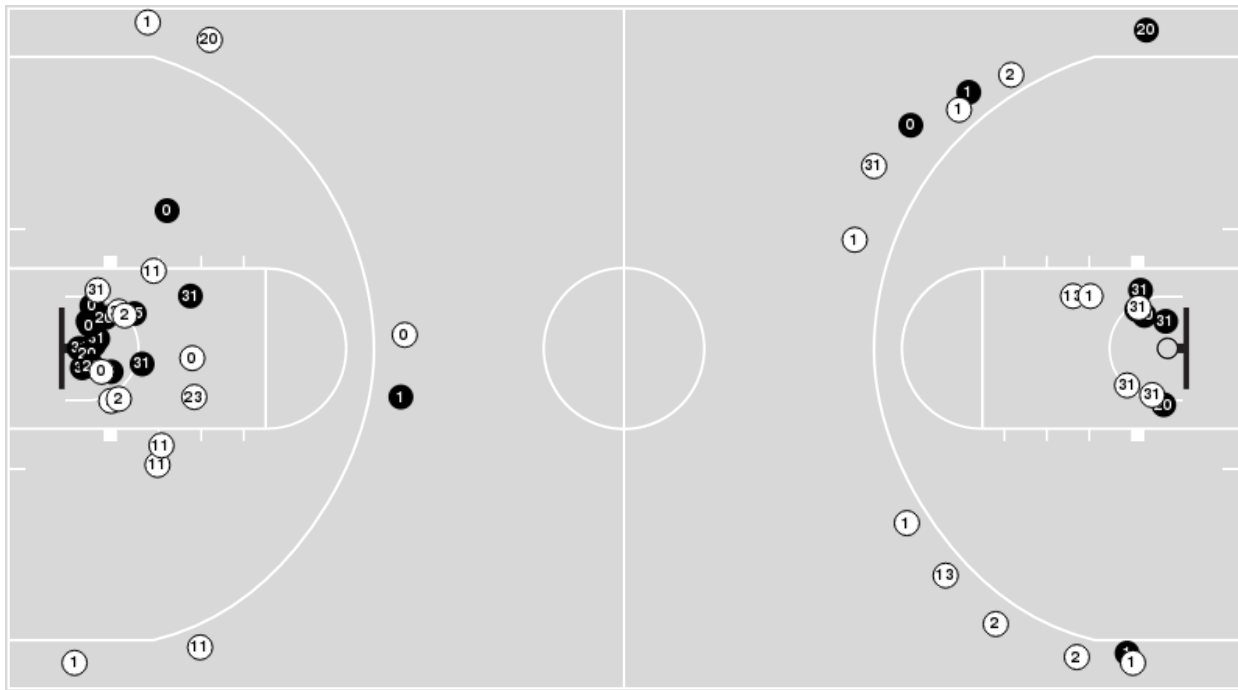


**Officials:** Roger Ayers, John Gaffney, Bart Lenox

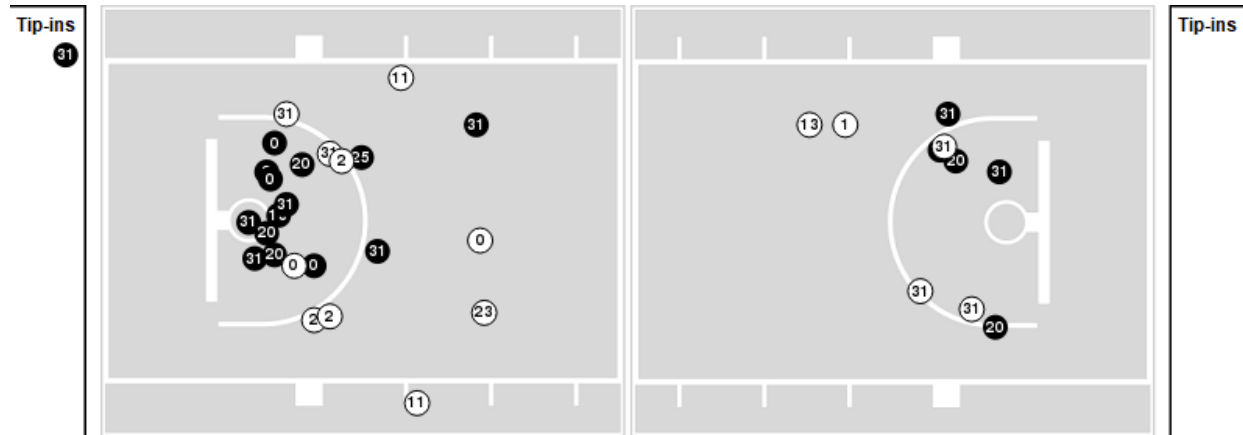
Players => 0, 1, 2, 4, 10, 11, 13, 20, 23, 25, 31, 33, 40, 44, 45, 51, 52, 55 FG Types=>All Results=>All

### Wake Forest

#### All Field Goals



#### Blow Up Chart



● Made    ○ Missed    N - Player Number

Wake Forest	M/A	%
Field Goals	25/55	45
2 Points	20/36	56
3 Points	5/19	26
Free Throws	21/27	78

Wake Forest	M/A	%
Points in the Paint	38 (19 / 33)	58
Fast Break Points	13 (6/7)	86
Second Chance Points	12 (6/9)	67
Effective FG%	50	



**Florida St. at Wake Forest**

01/04/22 LJV Coliseum, Winston-Salem  
2021-22 Men's Basketball

**Game Time:** 7:00 PM  
**Game Duration:** 1:57  
**Attendance:** 4,782

**Officials:** Roger Ayers, John Gaffney, Bart Lenox

**Florida St.**

Lineup	Quarter On	Time On	Quarter Off	Time Off	Time on Court	Score	Score Diff	Reb	Stl	Tov	Ass	PPP
0- Evans R/ 2- Polite A/ 4- Mills C/ 10- Osborne M/ 22- Butler J/	1	20:00	1	16:29	03:31	6-2	4	3	1	1	0	1.0000
1- Warley J/ 2- Polite A/ 4- Mills C/ 10- Osborne M/ 22- Butler J/	1	16:29	1	15:54	00:35	3-1	2	0	1	0	1	1.5000
1- Warley J/ 4- Mills C/ 24- McLeod N/ 31- Wilkes W/ 35- Cleveland M/	1	15:54	1	14:26	01:28	2-5	-3	0	1	1	0	0.6944
1- Warley J/ 21- Fletcher C/ 24- McLeod N/ 31- Wilkes W/ 35- Cleveland M/	1	14:26	1	14:21	00:05	0-0	0	0	0	0	0	0.0000
1- Warley J/ 2- Polite A/ 21- Fletcher C/ 24- McLeod N/ 31- Wilkes W/	1	14:21	1	13:23	00:58	0-3	-3	1	0	0	0	0.0000
0- Evans R/ 2- Polite A/ 21- Fletcher C/ 24- McLeod N/ 31- Wilkes W/	1	13:23	1	12:52	00:31	0-0	0	0	0	0	0	0.0000
0- Evans R/ 2- Polite A/ 4- Mills C/ 10- Osborne M/ 21- Fletcher C/	1	12:52	1	11:20	01:32	0-3	-3	1	0	0	0	0.0000
1- Warley J/ 2- Polite A/ 4- Mills C/ 10- Osborne M/ 21- Fletcher C/	1	11:20	1	09:25	01:55	0-4	-4	2	0	1	0	0.0000
1- Warley J/ 2- Polite A/ 4- Mills C/ 10- Osborne M/ 22- Butler J/	1	09:25	1	06:48	02:37	0-6	-6	1	1	0	0	0.0000
1- Warley J/ 2- Polite A/ 10- Osborne M/ 12- Lindner J/ 21- Fletcher C/	1	06:48	1	06:48	00:00	0-0	0	0	0	0	0	0.0000
2- Polite A/ 10- Osborne M/ 12- Lindner J/ 21- Fletcher C/ 31- Wilkes W/	1	06:48	1	05:42	01:06	5-1	4	0	2	1	2	1.6667
2- Polite A/ 10- Osborne M/ 21- Fletcher C/ 24- McLeod N/ 31- Wilkes W/	1	05:42	1	04:55	00:47	0-0	0	1	0	0	0	0.0000
1- Warley J/ 2- Polite A/ 10- Osborne M/ 24- McLeod N/ 31- Wilkes W/	1	04:55	2	20:00	04:55	6-10	-4	6	1	1	1	0.6849
0- Evans R/ 2- Polite A/ 4- Mills C/ 10- Osborne M/ 22- Butler J/	2	20:00	2	18:20	01:40	2-4	-2	1	0	1	0	1.0638
0- Evans R/ 4- Mills C/ 10- Osborne M/ 22- Butler J/ 35- Cleveland M/	2	18:20	2	15:27	02:53	4-7	-3	2	1	1	0	0.8000
1- Warley J/ 4- Mills C/ 10- Osborne M/ 21- Fletcher C/ 35- Cleveland M/	2	15:27	2	14:18	01:09	0-4	-4	0	1	0	0	0.0000
0- Evans R/ 4- Mills C/ 10- Osborne M/ 21- Fletcher C/ 35- Cleveland M/	2	14:18	2	14:18	00:00	0-0	0	0	0	0	0	0.0000
0- Evans R/ 1- Warley J/ 10- Osborne M/ 21- Fletcher C/ 35- Cleveland M/	2	14:18	2	14:13	00:05	0-0	0	0	0	0	0	0.0000
0- Evans R/ 1- Warley J/ 21- Fletcher C/ 24- McLeod N/ 35- Cleveland M/	2	14:13	2	12:09	02:04	4-5	-1	3	1	0	0	0.7519
0- Evans R/ 4- Mills C/ 22- Butler J/ 24- McLeod N/ 35- Cleveland M/	2	12:09	2	12:09	00:00	0-0	0	0	0	0	0	0.0000
0- Evans R/ 4- Mills C/ 10- Osborne M/ 22- Butler J/ 35- Cleveland M/	2	12:09	2	10:02	02:07	3-4	-1	0	1	0	0	0.6757
0- Evans R/ 2- Polite A/ 4- Mills C/ 10- Osborne M/ 35- Cleveland M/	2	10:02	2	09:17	00:45	5-2	3	1	1	0	1	2.1552
2- Polite A/ 4- Mills C/ 10- Osborne M/ 21- Fletcher C/ 35- Cleveland M/	2	09:17	2	07:22	01:55	5-2	3	2	3	1	0	1.1905
0- Evans R/ 2- Polite A/ 4- Mills C/ 10- Osborne M/ 35- Cleveland M/	2	07:22	2	05:43	01:39	0-1	-1	1	1	0	0	0.0000
1- Warley J/ 2- Polite A/ 4- Mills C/ 10- Osborne M/ 35- Cleveland M/	2	05:43	2	04:29	01:14	0-2	-2	2	0	2	0	0.0000
1- Warley J/ 2- Polite A/ 4- Mills C/ 15- Ballard Q/ 35- Cleveland M/	2	04:29	2	03:06	01:23	2-2	0	1	0	0	0	1.0000
1- Warley J/ 2- Polite A/ 4- Mills C/ 24- McLeod N/ 35- Cleveland M/	2	03:06	2	02:52	00:14	0-0	0	1	0	0	0	0.0000
0- Evans R/ 4- Mills C/ 24- McLeod N/ 31- Wilkes W/ 35- Cleveland M/	2	02:52	2	01:50	01:02	4-6	-2	0	0	0	1	1.6393
0- Evans R/ 4- Mills C/ 10- Osborne M/ 31- Wilkes W/ 35- Cleveland M/	2	01:50	2	00:00	01:50	3-2	1	1	0	0	0	0.7732



**Florida St. at Wake Forest**

01/04/22 LJVM Coliseum, Winston-Salem  
2021-22 Men's Basketball

**Game Time:** 7:00 PM  
**Game Duration:** 1:57  
**Attendance:** 4,782

**Officials:** Roger Ayers, John Gaffney, Bart Lenox

**Wake Forest**

Lineup	Quarter On	Time On	Quarter Off	Time Off	Time on Court	Score	Score Diff	Reb	Stl	Tov	Ass	PPP
0- LaRavia J/ 1- Mucius I/ 11- Whitt C/ 13- Walton D/ 31- Williams A/	1	20:00	1	16:29	03:31	3-6	-3	2	0	2	0	0.5208
0- LaRavia J/ 1- Mucius I/ 11- Whitt C/ 20- Sy K/ 31- Williams A/	1	16:29	1	14:26	02:03	5-4	1	2	0	2	1	1.1261
0- LaRavia J/ 1- Mucius I/ 13- Walton D/ 20- Sy K/ 31- Williams A/	1	14:26	1	12:52	01:34	3-1	2	3	0	1	1	1.0000
0- LaRavia J/ 2- Hildreth C/ 13- Walton D/ 20- Sy K/ 31- Williams A/	1	12:52	1	11:20	01:32	4-0	4	3	0	0	1	1.2048
0- LaRavia J/ 1- Mucius I/ 2- Hildreth C/ 20- Sy K/ 31- Williams A/	1	11:20	1	09:11	02:09	4-0	4	4	0	0	1	1.1628
0- LaRavia J/ 1- Mucius I/ 2- Hildreth C/ 11- Whitt C/ 20- Sy K/	1	09:11	1	08:53	00:18	1-0	1	1	0	0	0	2.2727
0- LaRavia J/ 1- Mucius I/ 2- Hildreth C/ 11- Whitt C/ 13- Walton D/	1	08:53	1	08:27	00:26	0-0	0	0	0	0	0	0.0000
0- LaRavia J/ 1- Mucius I/ 2- Hildreth C/ 13- Walton D/ 31- Williams A/	1	08:27	1	06:48	01:39	4-0	4	4	0	1	1	1.3889
0- LaRavia J/ 1- Mucius I/ 2- Hildreth C/ 20- Sy K/ 31- Williams A/	1	06:48	1	05:42	01:06	1-5	-4	1	0	2	0	0.4098
0- LaRavia J/ 1- Mucius I/ 11- Whitt C/ 20- Sy K/ 31- Williams A/	1	05:42	1	03:42	02:00	3-0	3	4	0	1	0	0.6303
0- LaRavia J/ 1- Mucius I/ 11- Whitt C/ 13- Walton D/ 20- Sy K/	1	03:42	1	03:34	00:08	0-0	0	0	0	0	0	0.0000
0- LaRavia J/ 1- Mucius I/ 2- Hildreth C/ 11- Whitt C/ 20- Sy K/	1	03:34	1	01:34	02:00	2-4	-2	1	1	0	1	0.6667
0- LaRavia J/ 1- Mucius I/ 2- Hildreth C/ 20- Sy K/ 31- Williams A/	1	01:34	2	20:00	01:34	5-2	3	1	0	0	1	2.5000
0- LaRavia J/ 1- Mucius I/ 11- Whitt C/ 13- Walton D/ 31- Williams A/	2	20:00	2	18:36	01:24	4-2	2	0	0	0	1	2.0000
0- LaRavia J/ 1- Mucius I/ 11- Whitt C/ 20- Sy K/ 31- Williams A/	2	18:36	2	15:27	03:09	7-4	3	4	1	1	2	1.4000
0- LaRavia J/ 1- Mucius I/ 2- Hildreth C/ 20- Sy K/ 31- Williams A/	2	15:27	2	14:18	01:09	4-0	4	3	0	1	1	1.3889
0- LaRavia J/ 2- Hildreth C/ 13- Walton D/ 20- Sy K/ 31- Williams A/	2	14:18	2	12:02	02:16	5-4	1	4	0	2	0	0.7764
0- LaRavia J/ 2- Hildreth C/ 11- Whitt C/ 13- Walton D/ 20- Sy K/	2	12:02	2	10:10	01:52	3-2	1	3	0	2	1	0.8721
0- LaRavia J/ 11- Whitt C/ 13- Walton D/ 20- Sy K/ 31- Williams A/	2	10:10	2	09:17	00:53	3-6	-3	0	0	1	0	1.0417
0- LaRavia J/ 1- Mucius I/ 11- Whitt C/ 13- Walton D/ 31- Williams A/	2	09:17	2	08:46	00:31	0-2	-2	1	0	1	0	0.0000
0- LaRavia J/ 1- Mucius I/ 2- Hildreth C/ 11- Whitt C/ 13- Walton D/	2	08:46	2	08:26	00:20	0-1	-1	0	0	0	0	0.0000
0- LaRavia J/ 1- Mucius I/ 2- Hildreth C/ 11- Whitt C/ 20- Sy K/	2	08:26	2	03:06	05:20	7-4	3	9	2	4	1	0.6506
0- LaRavia J/ 1- Mucius I/ 13- Walton D/ 20- Sy K/ 31- Williams A/	2	03:06	2	01:50	01:16	6-4	2	1	0	0	2	1.5000
0- LaRavia J/ 1- Mucius I/ 2- Hildreth C/ 20- Sy K/ 31- Williams A/	2	01:50	2	01:29	00:21	0-2	-2	0	0	1	0	0.0000
2- Hildreth C/ 11- Whitt C/ 23- Taylor L/ 25- McCray R/ 33- Marsh M/	2	01:29	2	00:00	01:29	2-1	1	2	0	0	0	1.0000



**Florida St. at Wake Forest**

01/04/22 LJV Coliseum, Winston-Salem  
2021-22 Men's Basketball

**Game Time:** 7:00 PM  
**Game Duration:** 1:57  
**Attendance:** 4,782

**Officials:** Roger Ayers, John Gaffney, Bart Lenox

**Florida St.**

Lineup	Time	Score	Score Diff	Pts/Min	Reb	Stl	Tov	Ass	PPP
0- Evans R/ 2- Polite A/ 4- Mills C/ 10- Osborne M/ 22- Butler J/	05:11	8-6	2	1.5434	4	1	2	0	1.0152
0- Evans R/ 4- Mills C/ 10- Osborne M/ 22- Butler J/ 35- Cleveland M/	05:00	7-11	-4	1.4000	2	2	1	0	0.7415
1- Warley J/ 2- Polite A/ 10- Osborne M/ 24- McLeod N/ 31- Wilkes W/	04:55	6-10	-4	1.2203	6	1	1	1	0.6849
1- Warley J/ 2- Polite A/ 4- Mills C/ 10- Osborne M/ 22- Butler J/	03:12	3-7	-4	0.9375	1	2	0	1	0.5000
0- Evans R/ 2- Polite A/ 4- Mills C/ 10- Osborne M/ 35- Cleveland M/	02:24	5-3	2	2.0833	2	2	0	1	0.9398
0- Evans R/ 1- Warley J/ 21- Fletcher C/ 24- McLeod N/ 35- Cleveland M/	02:04	4-5	-1	1.9355	3	1	0	0	0.7519
1- Warley J/ 2- Polite A/ 4- Mills C/ 10- Osborne M/ 21- Fletcher C/	01:55	0-4	-4	0.0000	2	0	1	0	0.0000
2- Polite A/ 4- Mills C/ 10- Osborne M/ 21- Fletcher C/ 35- Cleveland M/	01:55	5-2	3	2.6087	2	3	1	0	1.1905
0- Evans R/ 4- Mills C/ 10- Osborne M/ 31- Wilkes W/ 35- Cleveland M/	01:50	3-2	1	1.6364	1	0	0	0	0.7732
0- Evans R/ 2- Polite A/ 4- Mills C/ 10- Osborne M/ 21- Fletcher C/	01:32	0-3	-3	0.0000	1	0	0	0	0.0000
1- Warley J/ 4- Mills C/ 24- McLeod N/ 31- Wilkes W/ 35- Cleveland M/	01:28	2-5	-3	1.3636	0	1	1	0	0.6944
1- Warley J/ 2- Polite A/ 4- Mills C/ 15- Ballard Q/ 35- Cleveland M/	01:23	2-2	0	1.4458	1	0	0	0	1.0000
1- Warley J/ 2- Polite A/ 4- Mills C/ 10- Osborne M/ 35- Cleveland M/	01:14	0-2	-2	0.0000	2	0	2	0	0.0000
1- Warley J/ 4- Mills C/ 10- Osborne M/ 21- Fletcher C/ 35- Cleveland M/	01:09	0-4	-4	0.0000	0	1	0	0	0.0000
2- Polite A/ 10- Osborne M/ 12- Lindner J/ 21- Fletcher C/ 31- Wilkes W/	01:06	5-1	4	4.5455	0	2	1	2	1.6667
0- Evans R/ 4- Mills C/ 24- McLeod N/ 31- Wilkes W/ 35- Cleveland M/	01:02	4-6	-2	3.8710	0	0	0	1	1.6393
1- Warley J/ 2- Polite A/ 21- Fletcher C/ 24- McLeod N/ 31- Wilkes W/	00:58	0-3	-3	0.0000	1	0	0	0	0.0000
2- Polite A/ 10- Osborne M/ 21- Fletcher C/ 24- McLeod N/ 31- Wilkes W/	00:47	0-0	0	0.0000	1	0	0	0	0.0000
0- Evans R/ 2- Polite A/ 21- Fletcher C/ 24- McLeod N/ 31- Wilkes W/	00:31	0-0	0	0.0000	0	0	0	0	0.0000
1- Warley J/ 2- Polite A/ 4- Mills C/ 24- McLeod N/ 35- Cleveland M/	00:14	0-0	0	0.0000	1	0	0	0	0.0000
1- Warley J/ 21- Fletcher C/ 24- McLeod N/ 31- Wilkes W/ 35- Cleveland M/	00:05	0-0	0	0.0000	0	0	0	0	0.0000
0- Evans R/ 1- Warley J/ 10- Osborne M/ 21- Fletcher C/ 35- Cleveland M/	00:05	0-0	0	0.0000	0	0	0	0	0.0000
1- Warley J/ 2- Polite A/ 10- Osborne M/ 12- Lindner J/ 21- Fletcher C/	00:00	0-0	0	NaN	0	0	0	0	0.0000
0- Evans R/ 4- Mills C/ 10- Osborne M/ 21- Fletcher C/ 35- Cleveland M/	00:00	0-0	0	NaN	0	0	0	0	0.0000
0- Evans R/ 4- Mills C/ 22- Butler J/ 24- McLeod N/ 35- Cleveland M/	00:00	0-0	0	NaN	0	0	0	0	0.0000



**Florida St. at Wake Forest**

01/04/22 LJVM Coliseum, Winston-Salem  
2021-22 Men's Basketball

**Game Time:** 7:00 PM  
**Game Duration:** 1:57  
**Attendance:** 4,782

**Officials:** Roger Ayers, John Gaffney, Bart Lenox

**Wake Forest**

Lineup	Time	Score	Score Diff	Pts/Min	Reb	Stl	Tov	Ass	PPP
0- LaRavia J/ 1- Mucius I/ 2- Hildreth C/ 11- Whitt C/ 20- Sy K/	07:38	10-8	2	1.3100	11	3	4	2	0.7042
0- LaRavia J/ 1- Mucius I/ 11- Whitt C/ 20- Sy K/ 31- Williams A/	07:12	15-8	7	2.0833	10	1	4	3	1.0563
0- LaRavia J/ 1- Mucius I/ 2- Hildreth C/ 20- Sy K/ 31- Williams A/	06:19	14-9	5	2.2164	9	0	4	3	1.1905
0- LaRavia J/ 1- Mucius I/ 11- Whitt C/ 13- Walton D/ 31- Williams A/	05:26	7-10	-3	1.2883	3	0	3	1	0.7991
0- LaRavia J/ 2- Hildreth C/ 13- Walton D/ 20- Sy K/ 31- Williams A/	03:48	9-4	5	2.3684	7	0	2	1	0.9221
0- LaRavia J/ 1- Mucius I/ 13- Walton D/ 20- Sy K/ 31- Williams A/	02:50	9-5	4	3.1765	4	0	1	3	1.2857
0- LaRavia J/ 2- Hildreth C/ 11- Whitt C/ 13- Walton D/ 20- Sy K/	01:52	3-2	1	1.6071	3	0	2	1	0.8721
0- LaRavia J/ 1- Mucius I/ 2- Hildreth C/ 13- Walton D/ 31- Williams A/	01:39	4-0	4	2.4242	4	0	1	1	1.3889
2- Hildreth C/ 11- Whitt C/ 23- Taylor L/ 25- McCray R/ 33- Marsh M/	01:29	2-1	1	1.3483	2	0	0	0	1.0000
0- LaRavia J/ 11- Whitt C/ 13- Walton D/ 20- Sy K/ 31- Williams A/	00:53	3-6	-3	3.3962	0	0	1	0	1.0417
0- LaRavia J/ 1- Mucius I/ 2- Hildreth C/ 11- Whitt C/ 13- Walton D/	00:46	0-1	-1	0.0000	0	0	0	0	0.0000
0- LaRavia J/ 1- Mucius I/ 11- Whitt C/ 13- Walton D/ 20- Sy K/	00:08	0-0	0	0.0000	0	0	0	0	0.0000