



Officials: Ron Groover, Bill Covington, Brian O'Connell

Louisville - 70

Record: 10-5 (4-1)

NO.	Name	F	Min	FG		3P		FT		Rebounds			Fouls		TP	AS	TO	ST	Blocks		+/-
				M-A	M-A	M-A	M-A	OR	DR	TOT	PF	FD	BS	BA							
5	Malik Williams	F	26:43	2-6	0-2	0-0	1	6	7	1	1	4	1	0	0	0	0	0	0	0	-18
10	Samuell Williamson	F	22:47	5-9	0-1	3-7	4	3	7	1	3	13	0	2	0	0	0	0	0	-17	
33	Matt Cross	F	26:04	2-9	2-8	0-0	0	4	4	2	1	6	1	1	1	1	0	0	0	-6	
0	Noah Locke	G	24:17	2-6	2-5	0-0	0	0	0	2	0	6	2	2	0	0	0	0	0	-19	
13	Jarrod West	G	12:37	1-3	0-1	0-0	0	1	1	3	1	2	1	1	0	0	0	1	-5		
21	Sydney Curry		13:17	3-5	0-0	0-1	2	4	6	4	1	6	0	0	0	0	0	0	9		
3	El Ellis		23:03	5-12	2-6	2-2	0	3	3	4	1	14	3	1	1	0	1	8			
11	Mason Faulkner		27:23	2-4	1-3	7-8	1	2	3	3	7	12	3	2	1	0	0	-4			
24	Jae'Lyn Withers		13:34	1-3	0-0	2-2	1	3	4	2	2	4	0	0	0	0	1	-1			
14	Dre Davis		10:15	1-2	1-1	0-0	0	2	2	0	1	3	0	1	0	0	0	8			
Team							1	0	1				0								
Totals				24-59	8-27	14-20	10	28	38	22	18	70	11	10	3	0	3	-9			

Shooting By Period		
1st FG%	13-29	44.8%
3PT%	5-11	45.5%
FT%	9-11	81.8%
2nd FG%	11-30	36.7%
3PT%	3-16	18.8%
FT%	5-9	55.6%
GM FG%	24-59	40.7%
3PT%	8-27	29.6%
FT%	14-20	70.0%

Dead Ball Rebounds: 3, 0

Technical Fouls: NONE

Florida State - 79

Record: 8-5 (2-2)

NO.	Name	F	Min	FG		3P		FT		Rebounds			Fouls		TP	AS	TO	ST	Blocks		+/-
				M-A	M-A	M-A	M-A	OR	DR	TOT	PF	FD	BS	BA							
10	Malik Osborne	F	24:01	1-6	0-3	4-4	2	4	6	1	4	6	2	0	2	0	0	0	0	1	
22	John Butler	F	12:46	2-4	1-1	0-0	2	3	5	2	0	5	1	0	0	0	0	0	8		
0	RayQuan Evans	G	23:08	0-4	0-1	0-0	0	1	1	2	0	0	1	1	0	0	0	1			
2	Anthony Polite	G	30:17	2-7	0-2	4-4	2	6	8	4	3	8	3	2	2	1	0	1			
4	Caleb Mills	G	23:47	9-16	3-5	6-8	0	4	4	4	6	27	1	1	0	0	0	6			
1	Jalen Warley		17:31	2-3	1-2	0-0	0	0	0	0	0	5	3	0	0	1	0	10			
24	Naheem McLeod		15:59	2-3	0-0	1-4	2	0	2	0	3	5	0	1	0	1	0	8			
35	Matthew Cleveland		27:08	7-8	1-1	2-6	1	4	5	2	4	17	0	0	0	0	0	9			
31	Wyatt Wilkes		14:36	2-7	2-7	0-2	1	3	4	0	2	6	2	0	0	0	0	-4			
21	Cam'Ron Fletcher		10:47	0-1	0-1	0-0	0	1	1	3	0	0	1	1	1	0	0	5			
Team							0	2	2				0								
Totals				27-59	8-23	17-28	10	28	38	18	22	79	14	6	5	3	0	9			

Shooting By Period		
1st FG%	19-36	52.8%
3PT%	7-16	43.8%
FT%	5-7	71.4%
2nd FG%	8-23	34.8%
3PT%	1-7	14.3%
FT%	12-21	57.1%
GM FG%	27-59	45.8%
3PT%	8-23	34.8%
FT%	17-28	60.7%

Dead Ball Rebounds: 5, 0

Technical Fouls: NONE

	UL	FSU
Biggest lead	5 (1st 18:00)	14 (2nd 16:21)
Best Scoring Run	7 (2nd 10:57)	7 (1st 5:15)
Lead Changes	11	
Times Tied	4	
Time with Lead	05:29	31:20

Points from	UL	FSU
Turnovers	5	12
Paint	26	32
Second Chance	19	11
Fast Breaks	7	8
Bench	39	33

	Period by Period Scoring		
	1st	2nd	TOT
UL	40	30	70
FSU	50	29	79



Period 1

Quarter Starters:

FSU	0 Evans R	2 Polite A	4 Mills C	10 Osborne M	22 Butler J
UL	0 Locke N	5 Williams M	10 Williamson S	13 West J	33 Cross M

Game Time	FSU	Score	Diff	UL
20:00	22 BUTLER J jumpball won			5 WILLIAMS M jumpball lost
19:50	4 MILLS C 3pt FG , jump shot missed			
19:50				10 WILLIAMSON S defensive rebound (1)
19:40				5 WILLIAMS M 2pt FG in the paint, layup missed
19:40				10 WILLIAMSON S offensive rebound (2)
19:33		0-2	-2	10 WILLIAMSON S 2pt FG second chance in the paint, dunk, made (2)
19:21	0 EVANS R 2pt FG in the paint, layup missed			
19:21				5 WILLIAMS M defensive rebound (1)
18:57		0-4	-4	13 WEST J 2pt FG in the paint, floating jump shot made (2)
18:35	4 MILLS C foul drawn (1)			33 CROSS M foul shooting (1 - 1)
18:35	4 MILLS C free throw 1 - 2 made (1)	1-4	-3	
18:35	4 MILLS C free throw 2 - 2 made (2)	2-4	-2	
18:18				0 LOCKE N 2pt FG outside the paint, pull up jump shot missed
18:15	22 BUTLER J defensive rebound (1)			
18:04	4 MILLS C 2pt FG outside the paint, jump shot missed			
18:02				33 CROSS M defensive rebound (1)
18:00		2-7	-5	0 LOCKE N 3pt FG fast break, jump shot made (3)
18:00				13 WEST J assist (1)
17:36	22 BUTLER J 2pt FG outside the paint, jump shot missed			
17:34	2 POLITE A offensive rebound (1)			
17:32	0 EVANS R 3pt FG second chance, jump shot missed			
17:29	10 OSBORNE M offensive rebound (1)			
17:15	4 MILLS C 2pt FG second chance in the paint, layup missed			
17:13				5 WILLIAMS M defensive rebound (2)
17:07				33 CROSS M 2pt FG in the paint, layup missed
17:03	4 MILLS C defensive rebound (1)			
16:42	2 POLITE A 2pt FG in the paint, driving layup made (2)	4-7	-3	
16:37	22 BUTLER J foul personal (1 - 1)			13 WEST J foul drawn (1)
16:37	0 EVANS R substitution out			
16:37	2 POLITE A substitution out			
16:37	10 OSBORNE M substitution out			
16:37	1 WARLEY J substitution in			
16:37	24 MCLEOD N substitution in			
16:37	35 CLEVELAND M substitution in			
16:37				5 WILLIAMS M substitution out
16:37				21 CURRY S substitution in
16:06				13 WEST J 2pt FG in the paint, layup blocked
16:06	24 MCLEOD N block (1)			
16:06	35 CLEVELAND M defensive rebound (1)			
16:06	35 CLEVELAND M 2pt FG fast break in the paint, layup made (2)	6-7	-1	
16:06	35 CLEVELAND M foul drawn (1)			0 LOCKE N foul shooting (1 - 2)
16:06	22 BUTLER J substitution out			



Louisville at Florida State

01/08/22 Donald L. Tucker Center, Tallahassee
2021-22 FSU Men's Basketball

Game Time: 8:00 PM

Game Duration: 2:06

Attendance: 9,527

Officials: Ron Groover, Bill Covington, Brian O'Connell

Game Time	FSU	Score	Diff	UL
16:06	31 WILKES W substitution in			
16:06	35 CLEVELAND M free throw fast break 1 - 1 missed			
16:06				10 WILLIAMSON S defensive rebound (3)
16:00				10 WILLIAMSON S 2pt FG outside the paint, jump shot missed
15:58	4 MILLS C defensive rebound (2)			
15:53	4 MILLS C 2pt FG fast break in the paint, driving layup made (4)	8-7	1	
15:39		8-9	-1	10 WILLIAMSON S 2pt FG in the paint, turnaround jump shot made (4)
15:21	31 WILKES W 3pt FG , jump shot made (3)	11-9	2	
15:21	4 MILLS C assist (1)			
15:02				33 CROSS M 3pt FG , jump shot missed
14:59	4 MILLS C defensive rebound (3)			
14:35	31 WILKES W 3pt FG , jump shot missed			
14:33				10 WILLIAMSON S defensive rebound (4)
14:26	35 CLEVELAND M foul shooting (1 - 2)			10 WILLIAMSON S foul drawn (1)
14:25	Timeout media			
14:25	4 MILLS C substitution out			
14:25	2 POLITE A substitution in			
14:25				0 LOCKE N substitution out
14:25				13 WEST J substitution out
14:25				33 CROSS M substitution out
14:25				3 ELLIS E substitution in
14:25				11 FAULKNER M substitution in
14:25				24 WITHERS J substitution in
14:25		11-10	1	10 WILLIAMSON S free throw 1 - 3 made (5)
14:25				10 WILLIAMSON S free throw 2 - 3 missed
14:25				offensive dead ball rebound (1)
14:24				10 WILLIAMSON S free throw 3 - 3 missed
14:23	2 POLITE A defensive rebound (2)			
14:08	31 WILKES W 3pt FG , jump shot missed			
14:06				3 ELLIS E defensive rebound (1)
14:02				3 ELLIS E 2pt FG in the paint, layup blocked
14:02	1 WARLEY J block (1)			
14:00				10 WILLIAMSON S offensive rebound (5)
14:00		11-12	-1	10 WILLIAMSON S 2pt FG second chance in the paint, layup made (7)
14:00				21 CURRY S substitution out
14:00				5 WILLIAMS M substitution in
13:38	24 MCLEOD N foul drawn (1)			24 WITHERS J foul shooting (1 - 3)
13:38	24 MCLEOD N free throw 1 - 2 made (1)	12-12	0	
13:38				10 WILLIAMSON S substitution out
13:38				14 DAVIS D substitution in
13:37	24 MCLEOD N free throw 2 - 2 missed			
13:36				5 WILLIAMS M defensive rebound (3)
13:24	2 POLITE A steal (1)			14 DAVIS D turnover lost ball (1)
13:17	24 MCLEOD N 2pt FG from turnover in the paint, dunk, made (3)	14-12	2	
13:17	31 WILKES W assist (1)			
13:02				5 WILLIAMS M 3pt FG , jump shot missed
13:00				24 WITHERS J offensive rebound (1)
13:00	2 POLITE A foul shooting (1 - 3)			24 WITHERS J foul drawn (1)



Officials: Ron Groover, Bill Covington, Brian O'Connell

Game Time	FSU	Score	Diff	UL
13:00		14-13	1	24 WITHERS J free throw 1 - 2 made (1)
13:00	1 WARLEY J substitution out			
13:00	0 EVANS R substitution in			
13:00		14-14	0	24 WITHERS J free throw 2 - 2 made (2)
12:53	0 EVANS R 2pt FG outside the paint, jump shot missed			
12:50	31 WILKES W offensive rebound (1)			
12:48	31 WILKES W 3pt FG second chance, jump shot missed			
12:46	24 MCLEOD N offensive rebound (1)			
12:29	31 WILKES W 3pt FG second chance, jump shot missed			
12:24	24 MCLEOD N offensive rebound (2)			
12:24	24 MCLEOD N 2pt FG second chance in the paint, dunk, made (5)	16-14	2	
12:03				3 ELLIS E 3pt FG , jump shot missed
12:01	31 WILKES W defensive rebound (2)			
11:50	2 POLITE A 2pt FG outside the paint, jump shot missed			
11:46				5 WILLIAMS M defensive rebound (4)
11:37		16-16	0	5 WILLIAMS M 2pt FG outside the paint, jump shot made (2)
11:37				3 ELLIS E assist (1)
11:18	2 POLITE A foul drawn (1)			3 ELLIS E foul personal (1 - 4)
11:18	Timeout media			
11:18	2 POLITE A substitution out			
11:18	24 MCLEOD N substitution out			
11:18	31 WILKES W substitution out			
11:18	4 MILLS C substitution in			
11:18	10 OSBORNE M substitution in			
11:18	21 FLETCHER C substitution in			
10:58	4 MILLS C 2pt FG outside the paint, jump shot made (6)	18-16	2	
10:42		18-19	-1	11 FAULKNER M 3pt FG , jump shot made (3)
10:13	4 MILLS C 3pt FG , jump shot made (9)	21-19	2	
10:13	21 FLETCHER C assist (1)			
09:52	21 FLETCHER C foul shooting (1 - 4)			11 FAULKNER M foul drawn (1)
09:52		21-20	1	11 FAULKNER M free throw 1 - 2 made (4)
09:52	35 CLEVELAND M substitution out			
09:52	2 POLITE A substitution in			
09:52				14 DAVIS D substitution out
09:52				10 WILLIAMSON S substitution in
09:52		21-21	0	11 FAULKNER M free throw 2 - 2 made (5)
09:40	10 OSBORNE M 3pt FG , jump shot missed			
09:36				3 ELLIS E defensive rebound (2)
09:19				10 WILLIAMSON S turnover bad pass (1)
09:19				3 ELLIS E substitution out
09:19				0 LOCKE N substitution in
09:04	21 FLETCHER C foul offensive (2 - 5)			24 WITHERS J foul drawn (2)
09:04	21 FLETCHER C turnover offensive (1)			
09:04	21 FLETCHER C substitution out			
09:04	22 BUTLER J substitution in			
08:49	10 OSBORNE M steal (1)			11 FAULKNER M turnover bad pass (1)
08:44	4 MILLS C 2pt FG fast break from turnover in the paint, driving layup made (11)	23-21	2	
08:44	10 OSBORNE M assist (1)			



Officials: Ron Groover, Bill Covington, Brian O'Connell

Game Time	FSU	Score	Diff	UL
08:28		23-24	-1	0 LOCKE N 3pt FG , jump shot made (6)
08:28				5 WILLIAMS M assist (1)
08:18	4 MILLS C 2pt FG in the paint, driving layup made (13)	25-24	1	
08:07				11 FAULKNER M 3pt FG , jump shot missed
08:04	22 BUTLER J defensive rebound (2)			
07:50	22 BUTLER J 3pt FG , jump shot made (3)	28-24	4	
07:50	0 EVANS R assist (1)			
07:41		28-26	2	24 WITHERS J 2pt FG fast break in the paint, dunk, made (4)
07:41				11 FAULKNER M assist (1)
07:17	2 POLITE A turnover travel (1)			
07:17	Timeout media			
07:17				11 FAULKNER M substitution out
07:17				24 WITHERS J substitution out
07:17				13 WEST J substitution in
07:17				33 CROSS M substitution in
06:51				5 WILLIAMS M 2pt FG from turnover outside the paint, jump shot missed
06:47				offensive rebound (14)
06:44		28-29	-1	33 CROSS M 3pt FG from turnover second chance, jump shot made (3)
06:44				0 LOCKE N assist (1)
06:14	4 MILLS C 2pt FG outside the paint, step back jump shot made (15)	30-29	1	
06:14	2 POLITE A assist (1)			
05:39				10 WILLIAMSON S 2pt FG in the paint, jump shot missed
05:37	0 EVANS R defensive rebound (1)			
05:29	4 MILLS C 3pt FG , jump shot made (18)	33-29	4	
05:29	22 BUTLER J assist (1)			
05:20	2 POLITE A steal (2)			0 LOCKE N turnover lost ball (1)
05:16	4 MILLS C foul drawn (2)			13 WEST J foul shooting (1 - 5)
05:15	4 MILLS C free throw fast break 1 - 2 made (19)	34-29	5	
05:15	0 EVANS R substitution out			
05:15	10 OSBORNE M substitution out			
05:15	22 BUTLER J substitution out			
05:15	1 WARLEY J substitution in			
05:15	24 MCLEOD N substitution in			
05:15	31 WILKES W substitution in			
05:15				0 LOCKE N substitution out
05:15				5 WILLIAMS M substitution out
05:15				3 ELLIS E substitution in
05:15				21 CURRY S substitution in
05:15	4 MILLS C free throw fast break 2 - 2 made (20)	35-29	6	
04:57				21 CURRY S 2pt FG in the paint, layup missed
04:56				10 WILLIAMSON S offensive rebound (6)
04:56	4 MILLS C foul shooting (1 - 6)			10 WILLIAMSON S foul drawn (2)
04:56		35-30	5	10 WILLIAMSON S free throw 1 - 2 made (8)
04:56		35-31	4	10 WILLIAMSON S free throw 2 - 2 made (9)
04:43	4 MILLS C 3pt FG , jump shot missed			
04:40	2 POLITE A offensive rebound (3)			

**Louisville at Florida State**01/08/22 Donald L. Tucker Center, Tallahassee
2021-22 FSU Men's Basketball

Game Time: 8:00 PM

Game Duration: 2:06

Attendance: 9,527

Officials: Ron Groover, Bill Covington, Brian O'Connell

Game Time	FSU	Score	Diff	UL
04:38	2 POLITE A 2pt FG second chance in the paint, jump shot missed			
04:35				13 WEST J defensive rebound (1)
04:06		35-33	2	3 ELLIS E 2pt FG outside the paint, step back jump shot made (2)
03:50	2 POLITE A 3pt FG , jump shot missed			
03:48	offensive dead ball rebound (1)			
03:48	4 MILLS C foul drawn (3)			3 ELLIS E foul personal (2 - 6)
03:48	Timeout media			
03:48	2 POLITE A substitution out			
03:48	35 CLEVELAND M substitution in			
03:48				13 WEST J substitution out
03:48				11 FAULKNER M substitution in
03:33	4 MILLS C 3pt FG second chance, jump shot made (23)	38-33	5	
03:33	31 WILKES W assist (2)			
03:14	4 MILLS C foul shooting (2 - 7)			3 ELLIS E foul drawn (1)
03:14		38-34	4	3 ELLIS E free throw 1 - 2 made (3)
03:14	4 MILLS C substitution out			
03:14	2 POLITE A substitution in			
03:14				21 CURRY S substitution out
03:14				33 CROSS M substitution out
03:14				5 WILLIAMS M substitution in
03:14				24 WITHERS J substitution in
03:14		38-35	3	3 ELLIS E free throw 2 - 2 made (4)
03:04	35 CLEVELAND M 2pt FG in the paint, alleyoop made (4)	40-35	5	
03:04	2 POLITE A assist (2)			
02:42				5 WILLIAMS M 3pt FG , jump shot missed
02:40	defensive rebound (16)			
02:23	35 CLEVELAND M 2pt FG in the paint, layup missed			
02:18	35 CLEVELAND M offensive rebound (2)			
02:17	35 CLEVELAND M 2pt FG second chance in the paint, jump shot made (6)	42-35	7	
02:16				Timeout 30 Sec
02:00				3 ELLIS E turnover bad pass (1)
02:00				10 WILLIAMSON S substitution out
02:00				0 LOCKE N substitution in
01:40	1 WARLEY J 3pt FG from turnover, jump shot made (3)	45-35	10	
01:40	2 POLITE A assist (3)			
01:21				3 ELLIS E 2pt FG in the paint, jump shot missed
01:17				5 WILLIAMS M offensive rebound (5)
01:17		45-37	8	5 WILLIAMS M 2pt FG second chance in the paint, layup made (4)
01:06	35 CLEVELAND M 2pt FG outside the paint, step back jump shot made (8)	47-37	10	
00:47		47-40	7	3 ELLIS E 3pt FG , jump shot made (7)
00:47				11 FAULKNER M assist (2)
00:33	31 WILKES W 3pt FG , jump shot made (6)	50-40	10	
00:33	1 WARLEY J assist (1)			
00:04				3 ELLIS E 3pt FG , jump shot missed
00:03	defensive rebound (18)			
END OF PERIOD				



Official Basketball Play by Play - First Half
Louisville at Florida State
01/08/22 Donald L. Tucker Center, Tallahassee
2021-22 FSU Men's Basketball

Game Time: 8:00 PM
Game Duration: 2:06
Attendance: 9,527

Officials: Ron Groover, Bill Covington, Brian O'Connell

Game Time	FSU	Score	Diff	UL
FSU 50-40 UL				



Officials: Ron Groover, Bill Covington, Brian O'Connell

Louisville - 40

NO.	Name	F	Min	FG			3P			FT			Rebounds			Fouls		TP	AS	TO	ST	Blocks		+/-
				M-A	M-A	M-A	OR	DR	TOT	PF	FD	BS	BA											
5	Malik Williams	F	15:22	2-6	0-2	0-0	1	4	5	0	0	4	1	0	0	0	0	0	0	0	0	0	-9	
10	Samuell Williamson	F	14:14	3-5	0-0	3-5	3	3	6	0	2	9	0	1	0	0	0	0	0	0	0	0	-6	
33	Matt Cross	F	09:38	1-3	1-2	0-0	0	1	1	1	0	3	0	0	0	0	0	0	0	0	0	0	-4	
0	Noah Locke	G	11:39	2-3	2-2	0-0	0	0	0	1	0	6	1	1	1	0	0	0	0	0	0	0	-10	
13	Jarrold West	G	09:04	1-2	0-0	0-0	0	1	1	1	1	2	1	0	0	0	0	0	0	0	1	0	-2	
21	Sydney Curry		04:38	0-1	0-0	0-0	0	0	0	0	0	0	0	0	0	0	0	0	0	0	0	0	-1	
3	El Ellis		10:21	2-6	1-3	2-2	0	2	2	2	1	7	1	1	1	0	0	0	0	1	0	0	-3	
11	Mason Faulkner		10:56	1-2	1-2	2-2	0	0	0	0	1	5	2	1	0	0	0	0	0	0	0	0	-8	
24	Jae'Lyn Withers		10:22	1-1	0-0	2-2	1	0	1	1	2	4	0	0	0	0	0	0	0	0	0	0	-6	
14	Dre Davis		03:46	0-0	0-0	0-0	0	0	0	0	0	0	0	0	1	0	0	0	0	0	0	0	-1	
Team												1	0	1		0		0						
Totals				13-29	5-11	9-11	6	11	17	6	7	40	6	5	0	0	2							-10

Shooting By Period		
1st FG%	13-29	44.8%
3PT%	5-11	45.5%
FT%	9-11	81.8%
GM FG%	13-29	44.8%
3PT%	5-11	45.5%
FT%	9-11	81.8%

Dead Ball Rebounds: 1, 0

Technical Fouls::NONE

Florida State - 50

NO.	Name	F	Min	FG			3P			FT			Rebounds			Fouls		TP	AS	TO	ST	Blocks		+/-
				M-A	M-A	M-A	OR	DR	TOT	PF	FD	BS	BA											
10	Malik Osborne	F	09:26	0-1	0-1	0-0	1	0	1	0	0	0	1	0	1	0	0	0	0	0	0	0	2	
22	John Butler	F	07:43	1-2	1-1	0-0	0	2	2	1	0	3	1	0	0	0	0	0	0	0	0	0	4	
0	RayQuan Evans	G	11:08	0-3	0-1	0-0	0	1	1	0	0	0	1	0	0	0	0	0	0	0	0	0	1	
2	Anthony Polite	G	15:48	1-4	0-1	0-0	2	1	3	1	1	2	3	1	2	0	0	2	0	0	0	0	2	
4	Caleb Mills	G	13:39	8-12	3-5	4-4	0	3	3	2	3	23	1	0	0	0	0	0	0	0	0	6		
1	Jalen Warley		08:52	1-1	1-1	0-0	0	0	0	0	0	3	1	0	0	1	0	0	1	0	0	9		
24	Naheem McLeod		10:34	2-2	0-0	1-2	2	0	2	0	1	5	0	0	0	1	0	0	1	0	0	8		
35	Matthew Cleveland		10:33	4-5	0-0	0-1	1	1	2	1	1	8	0	0	0	0	0	0	0	0	0	12		
31	Wyatt Wilkes		10:03	2-6	2-6	0-0	1	1	2	0	0	6	2	0	0	0	0	0	0	0	0	6		
21	Cam'Ron Fletcher		02:14	0-0	0-0	0-0	0	0	0	2	0	0	1	1	0	0	0	0	0	0	0	0		
Team												0	2	2		0		0						
Totals				19-36	7-16	5-7	7	11	18	7	6	50	11	2	3	2	0	10						

Shooting By Period		
1st FG%	19-36	52.8%
3PT%	7-16	43.8%
FT%	5-7	71.4%
GM FG%	19-36	52.8%
3PT%	7-16	43.8%
FT%	5-7	71.4%

Dead Ball Rebounds: 1, 0

Technical Fouls::NONE

	UL	FSU
Biggest lead	5 (1st 18:00)	10 (1st 1:40)
Best Scoring Run	5(1st 6:44)	7(1st 5:15)
Lead Changes	11	
Times Tied	4	
Time with Lead	05:29	11:20

Points from	UL	FSU
Turnovers	3	9
Paint	12	18
Second Chance	13	7
Fast Breaks	5	8
Bench	16	22

	Period by Period Scoring		
	1st	2nd	TOT
UL	40	30	70
FSU	50	29	79



Louisville at Florida State

01/08/22 Donald L. Tucker Center, Tallahassee
2021-22 FSU Men's Basketball

Game Time: 8:00 PM
Game Duration: 2:06
Attendance: 9,527

Officials: Ron Groover, Bill Covington, Brian O'Connell

Period 2

Quarter Starters:

FSU	0 Evans R	2 Polite A	4 Mills C	10 Osborne M	22 Butler J
UL	0 Locke N	5 Williams M	10 Williamson S	13 West J	33 Cross M

Game Time	FSU	Score	Diff	UL
20:00	1 WARLEY J substitution out			
20:00	24 MCLEOD N substitution out			
20:00	31 WILKES W substitution out			
20:00	35 CLEVELAND M substitution out			
20:00	0 EVANS R substitution in			
20:00	4 MILLS C substitution in			
20:00	10 OSBORNE M substitution in			
20:00	22 BUTLER J substitution in			
20:00				3 ELLIS E substitution out
20:00				11 FAULKNER M substitution out
20:00				24 WITHERS J substitution out
20:00				10 WILLIAMSON S substitution in
20:00				13 WEST J substitution in
20:00				33 CROSS M substitution in
19:45				0 LOCKE N 3pt FG , jump shot missed
19:42	4 MILLS C defensive rebound (4)			
19:22	10 OSBORNE M 3pt FG , jump shot missed			
19:17				33 CROSS M defensive rebound (2)
19:02				10 WILLIAMSON S 2pt FG outside the paint, turnaround jump shot missed
18:58	10 OSBORNE M defensive rebound (2)			
18:46	2 POLITE A 2pt FG outside the paint, jump shot missed			
18:44				5 WILLIAMS M defensive rebound (6)
18:15				13 WEST J 3pt FG , jump shot missed
18:07	2 POLITE A defensive rebound (4)			
17:46	10 OSBORNE M foul drawn (1)			13 WEST J foul personal (2 - 1)
17:46	2 POLITE A substitution out			
17:46	35 CLEVELAND M substitution in			
17:24	10 OSBORNE M 2pt FG in the paint, turnaround jump shot made (2)	52-40	12	
17:13	4 MILLS C foul drawn (4)			13 WEST J foul offensive (3 - 2)
17:13				13 WEST J turnover offensive (1)
17:13				13 WEST J substitution out
17:13				11 FAULKNER M substitution in
16:58	4 MILLS C 2pt FG from turnover in the paint, driving layup missed			
16:56				33 CROSS M defensive rebound (3)
16:52				33 CROSS M 3pt FG , jump shot missed
16:52				offensive dead ball rebound (2)
16:52	10 OSBORNE M foul personal (1 - 1)			5 WILLIAMS M foul drawn (1)
16:52	4 MILLS C substitution out			
16:52	2 POLITE A substitution in			
16:36				33 CROSS M turnover lost ball (1)
16:24	10 OSBORNE M 2pt FG from turnover in the paint, layup missed			



Louisville at Florida State

01/08/22 Donald L. Tucker Center, Tallahassee
2021-22 FSU Men's Basketball

Game Time: 8:00 PM
Game Duration: 2:06
Attendance: 9,527

Officials: Ron Groover, Bill Covington, Brian O'Connell

Game Time	FSU	Score	Diff	UL
16:21	22 BUTLER J offensive rebound (3)			
16:21	22 BUTLER J 2pt FG from turnover second chance in the paint, layup missed			
16:21	22 BUTLER J offensive rebound (4)			
16:21	22 BUTLER J 2pt FG from turnover second chance in the paint, layup made (5)	54-40	14	
16:04	jump ball situation			
16:04	10 OSBORNE M steal (2)			10 WILLIAMSON S turnover lost ball (2)
16:04				10 WILLIAMSON S substitution out
16:04				3 ELLIS E substitution in
16:04	10 OSBORNE M substitution out			
16:04	24 MCLEOD N substitution in			
15:53	24 MCLEOD N foul drawn (2)			3 ELLIS E foul personal (3 - 3)
15:53	Timeout media			
15:35	24 MCLEOD N turnover bad pass (1)			33 CROSS M steal (1)
15:35	22 BUTLER J foul personal (2 - 2)			33 CROSS M foul drawn (1)
15:11				11 FAULKNER M 3pt FG from turnover, jump shot missed
15:08	22 BUTLER J defensive rebound (5)			
14:57	24 MCLEOD N foul drawn (3)			5 WILLIAMS M foul shooting (1 - 4)
14:57	24 MCLEOD N free throw 1 - 2 missed			
14:57	offensive dead ball rebound (2)			
14:57	22 BUTLER J substitution out			
14:57	31 WILKES W substitution in			
14:57				0 LOCKE N substitution out
14:57				5 WILLIAMS M substitution out
14:57				14 DAVIS D substitution in
14:57				21 CURRY S substitution in
14:56	24 MCLEOD N free throw 2 - 2 missed			
14:54				21 CURRY S defensive rebound (1)
14:39		54-43	11	33 CROSS M 3pt FG , jump shot made (6)
14:39				3 ELLIS E assist (2)
14:30	31 WILKES W 3pt FG , jump shot missed			
14:27				14 DAVIS D defensive rebound (1)
14:21				21 CURRY S 2pt FG in the paint, layup missed
14:18	31 WILKES W defensive rebound (3)			
14:17	31 WILKES W foul drawn (1)			21 CURRY S foul personal (1 - 5)
14:02	24 MCLEOD N 2pt FG outside the paint, turnaround jump shot missed			
13:59				21 CURRY S defensive rebound (2)
13:57				33 CROSS M 3pt FG , jump shot missed
13:54	2 POLITE A defensive rebound (5)			
13:36	0 EVANS R turnover bad pass (1)			11 FAULKNER M steal (1)
13:31		54-45	9	3 ELLIS E 2pt FG fast break from turnover in the paint, driving layup made (9)
13:31				33 CROSS M assist (1)
13:20	Timeout 30 Sec			
13:20	Timeout media			
13:20	0 EVANS R substitution out			
13:20	24 MCLEOD N substitution out			
13:20	1 WARLEY J substitution in			



Louisville at Florida State

01/08/22 Donald L. Tucker Center, Tallahassee
2021-22 FSU Men's Basketball

Game Time: 8:00 PM
Game Duration: 2:06
Attendance: 9,527

Officials: Ron Groover, Bill Covington, Brian O'Connell

Game Time	FSU	Score	Diff	UL
13:20	10 OSBORNE M substitution in			
13:20				33 CROSS M substitution out
13:20				24 WITHERS J substitution in
13:10	10 OSBORNE M foul drawn (2)			21 CURRY S foul personal (2 - 6)
12:57	1 WARLEY J 3pt FG , jump shot missed			
12:53	10 OSBORNE M offensive rebound (3)			
12:51	35 CLEVELAND M 2pt FG second chance in the paint, driving layup made (10)	56-45	11	
12:51	1 WARLEY J assist (2)			
12:51	35 CLEVELAND M foul drawn (2)			24 WITHERS J foul shooting (2 - 7)
12:50	35 CLEVELAND M free throw 1 - 1 missed			
12:49				24 WITHERS J defensive rebound (2)
12:34				3 ELLIS E 3pt FG , jump shot missed
12:32				21 CURRY S offensive rebound (3)
12:32		56-47	9	21 CURRY S 2pt FG second chance in the paint, layup made (2)
12:32	2 POLITE A foul shooting (2 - 3)			21 CURRY S foul drawn (1)
12:32				21 CURRY S free throw 1 - 1 missed
12:31	31 WILKES W defensive rebound (4)			
12:12	10 OSBORNE M 2pt FG in the paint, turnaround jump shot missed			
12:10				24 WITHERS J defensive rebound (3)
11:57		56-50	6	14 DAVIS D 3pt FG , jump shot made (3)
11:57				11 FAULKNER M assist (3)
11:22	2 POLITE A 3pt FG , jump shot missed			
11:19				24 WITHERS J defensive rebound (4)
11:01				24 WITHERS J 2pt FG in the paint, jump shot missed
10:57				21 CURRY S offensive rebound (4)
10:57		56-52	4	21 CURRY S 2pt FG second chance in the paint, layup made (4)
10:40	31 WILKES W foul drawn (2)			21 CURRY S foul shooting (3 - 8)
10:40	Timeout media			
10:40	1 WARLEY J substitution out			
10:40	35 CLEVELAND M substitution out			
10:40	0 EVANS R substitution in			
10:40	4 MILLS C substitution in			
10:40	31 WILKES W free throw 1 - 2 missed			
10:40	offensive dead ball rebound (3)			
10:39	31 WILKES W free throw 2 - 2 missed			
10:38				21 CURRY S defensive rebound (5)
10:24	2 POLITE A foul personal (3 - 4)			11 FAULKNER M foul drawn (2)
10:24	31 WILKES W substitution out			
10:24	21 FLETCHER C substitution in			
10:21				24 WITHERS J 2pt FG in the paint, dunk, blocked
10:21	2 POLITE A block (1)			
10:16	2 POLITE A defensive rebound (6)			
10:08				24 WITHERS J substitution out
10:08				33 CROSS M substitution in
10:08	2 POLITE A substitution out			
10:08	35 CLEVELAND M substitution in			



Louisville at Florida State

01/08/22 Donald L. Tucker Center, Tallahassee
2021-22 FSU Men's Basketball

Game Time: 8:00 PM
Game Duration: 2:06
Attendance: 9,527

Officials: Ron Groover, Bill Covington, Brian O'Connell

Game Time	FSU	Score	Diff	UL
09:55	0 EVANS R 2pt FG in the paint, jump shot missed			
09:53				11 FAULKNER M defensive rebound (1)
09:53	0 EVANS R foul personal (1 - 5)			11 FAULKNER M foul drawn (3)
09:40	jump ball situation			
09:37				11 FAULKNER M turnover bad pass (2)
09:18	35 CLEVELAND M foul drawn (3)			11 FAULKNER M foul shooting (1 - 9)
09:18	35 CLEVELAND M free throw 1 - 2 missed			
09:18	offensive dead ball rebound (4)			
09:18	35 CLEVELAND M free throw 2 - 2 made (11)	57-52	5	
09:03				3 ELLIS E 2pt FG in the paint, floating jump shot missed
09:01	35 CLEVELAND M defensive rebound (3)			
08:54	4 MILLS C 2pt FG outside the paint, turnaround jump shot missed			
08:51				21 CURRY S defensive rebound (6)
08:49				14 DAVIS D 2pt FG in the paint, layup missed
08:46	10 OSBORNE M defensive rebound (4)			
08:32	21 FLETCHER C 3pt FG , jump shot missed			
08:29				14 DAVIS D defensive rebound (2)
08:28	0 EVANS R foul personal (2 - 6)			14 DAVIS D foul drawn (1)
08:28				14 DAVIS D substitution out
08:28				0 LOCKE N substitution in
08:23	4 MILLS C foul personal (3 - 7)			11 FAULKNER M foul drawn (4)
08:23		57-53	4	11 FAULKNER M 1&1 free throw 1 made (6)
08:23		57-54	3	11 FAULKNER M 1&1 free throw 2 made (7)
08:23				Timeout 30 Sec
08:23				Timeout media
08:09	10 OSBORNE M foul drawn (3)			21 CURRY S foul shooting (4 - 10)
08:09	10 OSBORNE M free throw 1 - 2 made (3)	58-54	4	
08:09				21 CURRY S substitution out
08:09				5 WILLIAMS M substitution in
08:09	10 OSBORNE M free throw 2 - 2 made (4)	59-54	5	
07:43	21 FLETCHER C steal (1)			0 LOCKE N turnover lost ball (2)
07:32	4 MILLS C foul offensive (4 - 8)			11 FAULKNER M foul drawn (5)
07:32	4 MILLS C turnover offensive (1)			
07:25				0 LOCKE N 3pt FG from turnover, jump shot missed
07:22	10 OSBORNE M defensive rebound (5)			
07:11	4 MILLS C foul drawn (5)			11 FAULKNER M foul personal (2 - 11)
07:11	4 MILLS C free throw 1 - 2 missed			
07:11	offensive dead ball rebound (5)			
07:11	0 EVANS R substitution out			
07:11	1 WARLEY J substitution in			
07:10	4 MILLS C free throw 2 - 2 missed			
07:09				33 CROSS M defensive rebound (4)
06:56				33 CROSS M 3pt FG , jump shot missed
06:54	35 CLEVELAND M defensive rebound (4)			
06:47	10 OSBORNE M 3pt FG , jump shot missed			
06:44				3 ELLIS E defensive rebound (3)
06:38		59-56	3	3 ELLIS E 2pt FG in the paint, driving layup made (11)
06:23	4 MILLS C 2pt FG in the paint, step back jump shot made (25)	61-56	5	



Louisville at Florida State

01/08/22 Donald L. Tucker Center, Tallahassee
2021-22 FSU Men's Basketball

Game Time: 8:00 PM
Game Duration: 2:06
Attendance: 9,527

Officials: Ron Groover, Bill Covington, Brian O'Connell

Game Time	FSU	Score	Diff	UL
06:03		61-58	3	11 FAULKNER M 2pt FG in the paint, driving layup made (9)
05:38	4 MILLS C 2pt FG in the paint, driving layup missed			
05:35				5 WILLIAMS M defensive rebound (7)
05:31	35 CLEVELAND M foul shooting (2 - 9)			11 FAULKNER M foul drawn (6)
05:31		61-59	2	11 FAULKNER M free throw 1 - 2 made (10)
05:31	4 MILLS C substitution out			
05:31	2 POLITE A substitution in			
05:31				0 LOCKE N substitution out
05:31				10 WILLIAMSON S substitution in
05:30				11 FAULKNER M free throw 2 - 2 missed
05:29	21 FLETCHER C defensive rebound (1)			
05:18				11 FAULKNER M substitution out
05:18				13 WEST J substitution in
05:13	2 POLITE A foul drawn (2)			3 ELLIS E foul personal (4 - 12)
05:13	2 POLITE A free throw 1 - 2 made (3)	62-59	3	
05:13				3 ELLIS E substitution out
05:13				0 LOCKE N substitution in
05:13	2 POLITE A free throw 2 - 2 made (4)	63-59	4	
04:42		63-61	2	10 WILLIAMSON S 2pt FG outside the paint, floating jump shot made (11)
04:42				0 LOCKE N assist (2)
04:32	10 OSBORNE M foul drawn (4)			33 CROSS M foul personal (2 - 13)
04:32	10 OSBORNE M free throw 1 - 2 made (5)	64-61	3	
04:32				13 WEST J substitution out
04:32				11 FAULKNER M substitution in
04:32	10 OSBORNE M free throw 2 - 2 made (6)	65-61	4	
04:32	10 OSBORNE M substitution out			
04:32	24 MCLEOD N substitution in			
04:19				33 CROSS M 3pt FG , jump shot missed
04:16	2 POLITE A defensive rebound (7)			
04:06	1 WARLEY J 2pt FG in the paint, driving layup made (5)	67-61	6	
03:35				0 LOCKE N 3pt FG , step back jump shot missed
03:32				10 WILLIAMSON S offensive rebound (7)
03:30		67-63	4	10 WILLIAMSON S 2pt FG second chance in the paint, layup made (13)
03:04	2 POLITE A 2pt FG in the paint, pull up jump shot made (6)	69-63	6	
02:41				10 WILLIAMSON S 3pt FG , jump shot missed
02:38				11 FAULKNER M offensive rebound (2)
02:31				33 CROSS M 3pt FG second chance, jump shot missed
02:29	2 POLITE A defensive rebound (8)			
01:59	35 CLEVELAND M 3pt FG , jump shot made (14)	72-63	9	
01:59	1 WARLEY J assist (3)			
01:51	21 FLETCHER C foul personal (3 - 10)			11 FAULKNER M foul drawn (7)
01:51	Timeout media			
01:51	1 WARLEY J substitution out			
01:51	21 FLETCHER C substitution out			
01:51	24 MCLEOD N substitution out			
01:51	0 EVANS R substitution in			
01:51	4 MILLS C substitution in			
01:51	10 OSBORNE M substitution in			



Louisville at Florida State

01/08/22 Donald L. Tucker Center, Tallahassee
2021-22 FSU Men's Basketball

Game Time: 8:00 PM
Game Duration: 2:06
Attendance: 9,527

Officials: Ron Groover, Bill Covington, Brian O'Connell

Game Time	FSU	Score	Diff	UL
01:51				0 LOCKE N substitution out
01:51				5 WILLIAMS M substitution out
01:51				3 ELLIS E substitution in
01:51				21 CURRY S substitution in
01:51		72-64	8	11 FAULKNER M free throw 1 - 2 made (11)
01:51		72-65	7	11 FAULKNER M free throw 2 - 2 made (12)
01:29	35 CLEVELAND M 2pt FG in the paint, dunk, made (16)	74-65	9	
01:29	10 OSBORNE M assist (2)			
01:16		74-67	7	21 CURRY S 2pt FG in the paint, layup made (6)
01:16				3 ELLIS E assist (3)
01:16				Timeout 60 Sec
01:16				33 CROSS M substitution out
01:16				0 LOCKE N substitution in
01:12	35 CLEVELAND M foul drawn (4)			10 WILLIAMSON S foul personal (1 - 14)
01:12	35 CLEVELAND M free throw 1 - 2 made (17)	75-67	8	
01:12	35 CLEVELAND M free throw 2 - 2 missed			
01:11				11 FAULKNER M defensive rebound (3)
01:05	2 POLITE A foul shooting (4 - 11)			10 WILLIAMSON S foul drawn (3)
01:05				10 WILLIAMSON S free throw fast break 1 - 2 missed
01:05				offensive dead ball rebound (3)
01:05				10 WILLIAMSON S free throw fast break 2 - 2 missed
01:04	35 CLEVELAND M defensive rebound (5)			
00:53	4 MILLS C foul drawn (6)			0 LOCKE N foul personal (2 - 15)
00:53	4 MILLS C free throw 1 - 2 made (26)	76-67	9	
00:53				10 WILLIAMSON S substitution out
00:53				33 CROSS M substitution in
00:53	4 MILLS C free throw 2 - 2 made (27)	77-67	10	
00:39		77-70	7	3 ELLIS E 3pt FG , jump shot made (14)
00:39				Timeout 30 Sec
00:39	35 CLEVELAND M substitution out			
00:39	1 WARLEY J substitution in			
00:25	2 POLITE A foul drawn (3)			11 FAULKNER M foul personal (3 - 16)
00:25	2 POLITE A free throw 1 - 2 made (7)	78-70	8	
00:25	2 POLITE A free throw 2 - 2 made (8)	79-70	9	
00:17				3 ELLIS E 3pt FG , jump shot missed
00:14	10 OSBORNE M defensive rebound (6)			
00:02	2 POLITE A turnover lost ball (2)			3 ELLIS E steal (1)
END OF GAME				
FSU 79-70 UL				



Louisville at Florida State

01/08/22 Donald L. Tucker Center, Tallahassee
2021-22 FSU Men's Basketball

Game Time: 8:00 PM
Game Duration: 2:06
Attendance: 9,527

Officials: Ron Groover, Bill Covington, Brian O'Connell

Louisville - 30

NO.	Name	F	Min	FG			3P			FT			Rebounds			Fouls		TP	AS	TO	ST	Blocks		+/-
				M-A	M-A	M-A	OR	DR	TOT	PF	FD	BS	BA											
5	Malik Williams	F	11:21	0-0	0-0	0-0	0	2	2	1	1	0	0	0	0	0	0	0	0	0	0	0	-9	
10	Samuell Williamson	F	08:33	2-4	0-1	0-2	1	0	1	1	1	4	0	1	0	0	0	0	0	0	0	0	-11	
33	Matt Cross	F	16:26	1-6	1-6	0-0	0	3	3	1	1	3	1	1	1	1	0	0	0	0	0	0	-2	
0	Noah Locke	G	12:38	0-3	0-3	0-0	0	0	0	1	0	0	1	1	1	0	0	0	0	0	0	0	-9	
13	Jarrod West	G	03:33	0-1	0-1	0-0	0	0	0	2	0	0	0	0	1	0	0	0	0	0	0	0	-3	
11	Mason Faulkner		16:27	1-2	0-1	5-6	1	2	3	3	6	7	1	1	1	1	0	0	0	0	0	0	4	
3	El Ellis		12:42	3-6	1-3	0-0	0	1	1	2	0	7	2	0	1	0	0	0	0	0	0	0	11	
14	Dre Davis		06:29	1-2	1-1	0-0	0	2	2	0	1	3	0	0	0	0	0	0	0	0	0	0	9	
21	Sydney Curry		08:39	3-4	0-0	0-1	2	4	6	4	1	6	0	0	0	0	0	0	0	0	0	0	10	
24	Jae'Lyn Withers		03:12	0-2	0-0	0-0	0	3	3	1	0	0	0	0	0	0	0	0	0	0	0	1	5	
Team							0	0	0			0			0									
Totals				11-30	3-16	5-9	4	17	21	16	11	30	5	5	3	0	1	1						

Shooting By Period		
2nd FG%	11-30	36.7%
3PT%	3-16	18.8%
FT%	5-9	55.6%
GM FG%	11-30	36.7%
3PT%	3-16	18.8%
FT%	5-9	55.6%

Dead Ball Rebounds: 2, 0

Technical Fouls::NONE

Florida State - 29

NO.	Name	F	Min	FG			3P			FT			Rebounds			Fouls		TP	AS	TO	ST	Blocks		+/-
				M-A	M-A	M-A	OR	DR	TOT	PF	FD	BS	BA											
10	Malik Osborne	F	14:35	1-5	0-2	4-4	1	4	5	1	4	6	1	0	0	1	0	0	0	0	0	0	-1	
22	John Butler	F	05:03	1-2	0-0	0-0	2	1	3	1	0	2	0	0	0	0	0	0	0	0	0	0	4	
0	RayQuan Evans	G	12:00	0-1	0-0	0-0	0	0	0	2	0	0	0	1	0	0	0	0	0	0	0	0	0	
2	Anthony Polite	G	14:29	1-3	0-1	4-4	0	5	5	3	2	6	0	1	0	1	0	1	0	0	0	-1		
4	Caleb Mills	G	10:08	1-4	0-0	2-4	0	1	1	2	3	4	0	1	0	0	0	0	0	0	0	0		
35	Matthew Cleveland		16:35	3-3	1-1	2-5	0	3	3	1	3	9	0	0	0	0	0	0	0	0	0	0	-3	
24	Naheem McLeod		05:25	0-1	0-0	0-2	0	0	0	0	2	0	0	1	0	0	0	0	0	0	0	0		
31	Wyatt Wilkes		04:33	0-1	0-1	0-2	0	2	2	0	2	0	0	0	0	0	0	0	0	0	0	0	-10	
1	Jalen Warley		08:39	1-2	0-1	0-0	0	0	0	0	0	2	2	0	0	0	0	0	0	0	0	1		
21	Cam'Ron Fletcher		08:33	0-1	0-1	0-0	0	1	1	1	0	0	0	0	1	0	0	0	0	0	0	5		
Team							0	0	0			0			0									
Totals				8-23	1-7	12-21	3	17	20	11	16	29	3	4	2	1	0	-1						

Shooting By Period		
2nd FG%	8-23	34.8%
3PT%	1-7	14.3%
FT%	12-21	57.1%
GM FG%	8-23	34.8%
3PT%	1-7	14.3%
FT%	12-21	57.1%

Dead Ball Rebounds: 4, 0

Technical Fouls::NONE

	UL	FSU
Biggest lead	0 (1 st 20:00)	14 (2 nd 16:21)
Best Scoring Run	7(2 nd 10:57)	5(2 nd 1:59)
Lead Changes	0	
Times Tied	0	
Time with Lead	00:00	19:45

Points from	UL	FSU
Turnovers	2	3
Paint	14	14
Second Chance	6	4
Fast Breaks	2	0
Bench	23	11

Period by Period Scoring			
	1st	2nd	TOT
UL	40	30	70
FSU	50	29	79

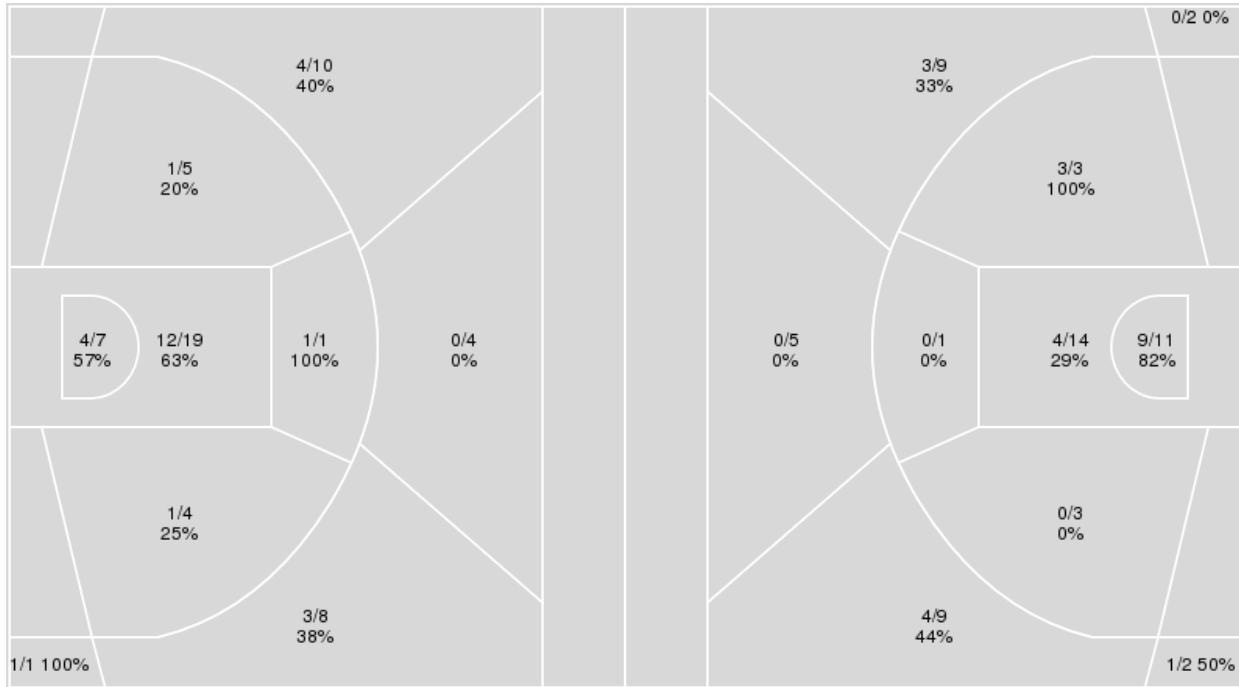


Officials: Ron Groover, Bill Covington, Brian O'Connell

{ Players => 0, 1, 2, 4, 5, 10, 11, 12, 15, 21, 22, 24, 25, 30, 31, 34, 35, 40, 42, 44;} FG Types => All; Results => All;

Florida State

Louisville



Florida State	M/A	%
Field Goals	27/59	46
2 Points	19/36	53
3 Points	8/23	35
Free Throws	17/28	61

Louisville	M/A	%
Field Goals	24/59	41
2 Points	16/32	50
3 Points	8/27	30
Free Throws	14/20	70



Louisville at Florida State

01/08/22 Donald L. Tucker Center, Tallahassee
2021-22 FSU Men's Basketball

Game Time: 8:00 PM
Game Duration: 2:06
Attendance: 9,527

Officials: Ron Groover, Bill Covington, Brian O'Connell

Louisville

No	Name	Mins		Score		Points Diff		Points per Min		Assists		Rebounds		Steals		Turnovers	
		On	Off	On	Off	On	Off	On	Off	On	Off	On	Off	On	Off	On	Off
0	Noah Locke	24:17	15:43	36 - 55	34 - 24	-19	10	1.48	2.16	6	5	18	20	2	1	6	4
3	El Ellis	23:03	16:57	49 - 41	21 - 38	8	-17	2.13	1.24	6	5	25	13	3	0	5	5
5	Malik Williams	26:43	13:17	39 - 57	31 - 22	-18	9	1.46	2.33	7	4	19	19	1	2	9	1
10	Samuell Williamson	22:47	17:13	35 - 52	35 - 27	-17	8	1.54	2.03	6	5	19	19	0	3	7	3
11	Mason Faulkner	27:23	12:37	52 - 56	18 - 23	-4	-5	1.90	1.43	8	3	26	12	3	0	8	2
13	Jarrold West	12:37	27:23	18 - 23	52 - 56	-5	-4	1.43	1.90	3	8	12	26	0	3	2	8
14	Dre Davis	10:15	29:45	20 - 12	50 - 67	8	-17	1.95	1.68	4	7	15	23	1	2	2	8
21	Sydney Curry	13:17	26:43	31 - 22	39 - 57	9	-18	2.33	1.46	4	7	19	19	2	1	1	9
24	Jae'Lyn Withers	13:34	26:26	30 - 31	40 - 48	-1	-8	2.21	1.51	5	6	13	25	0	3	4	6
33	Matt Cross	26:04	13:56	40 - 46	30 - 33	-6	-3	1.53	2.15	6	5	24	14	3	0	6	4

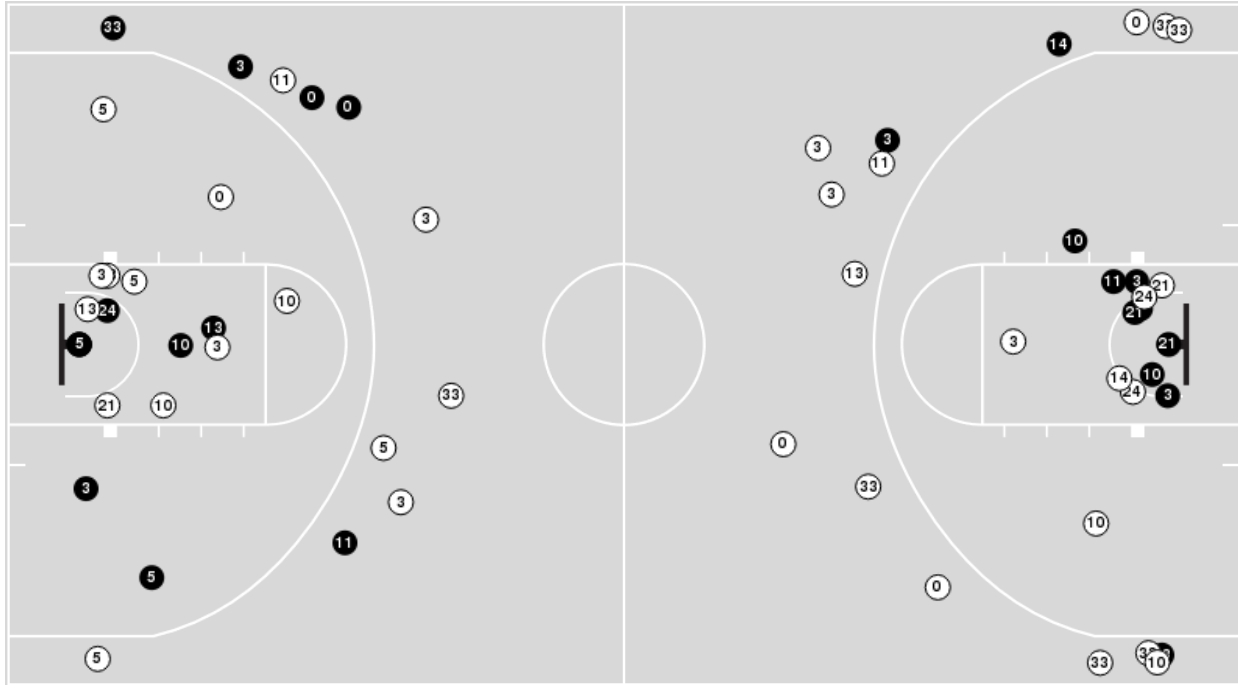
Florida State

No	Name	Mins		Score		Points Diff		Points per Min		Assists		Rebounds		Steals		Turnovers	
		On	Off	On	Off	On	Off	On	Off	On	Off	On	Off	On	Off	On	Off
0	RayQuan Evans	23:08	16:52	38 - 37	41 - 33	1	8	1.64	2.43	6	8	24	14	4	1	6	0
1	Jalen Warley	17:31	22:29	43 - 33	36 - 37	10	-1	2.45	1.60	8	6	15	23	1	4	1	5
2	Anthony Polite	30:17	09:43	57 - 56	22 - 14	1	8	1.88	2.26	11	3	31	7	4	1	5	1
4	Caleb Mills	23:47	16:13	47 - 41	32 - 29	6	3	1.98	1.97	8	6	20	18	3	2	4	2
10	Malik Osborne	24:01	15:59	44 - 43	35 - 27	1	8	1.83	2.19	7	7	21	17	4	1	4	2
21	Cam'Ron Fletcher	10:47	29:13	21 - 16	58 - 54	5	4	1.95	1.99	2	12	8	30	1	4	2	4
22	John Butler	12:46	27:14	23 - 15	56 - 55	8	1	1.80	2.06	4	10	13	25	3	2	2	4
24	Naheem McLeod	15:59	24:01	35 - 27	44 - 43	8	1	2.19	1.83	7	7	17	21	1	4	2	4
31	Wyatt Wilkes	14:36	25:24	28 - 32	51 - 38	-4	13	1.92	2.01	7	7	15	23	1	4	1	5
35	Matthew Cleveland	27:08	12:52	59 - 50	20 - 20	9	0	2.17	1.55	10	4	26	12	3	2	3	3

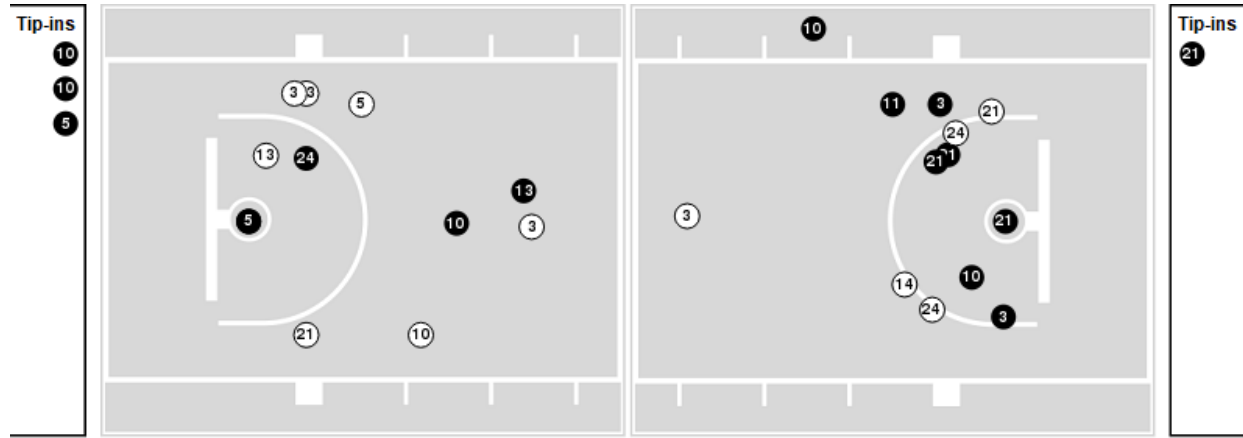


Players => AllFG Types=>AllResults=>All
Louisville

All Field Goals



Blow Up Chart



● Made ○ Missed N - Player Number

Louisville	M/A	%
Field Goals	24/59	41
2 Points	16/32	50
3 Points	8/27	30
Free Throws	14/20	70

Louisville	M/A	%
Points in the Paint	26 (13 / 25)	52
Fast Break Points	7 (3/5)	60
Second Chance Points	19 (11/13)	85
Effective FG%	47	

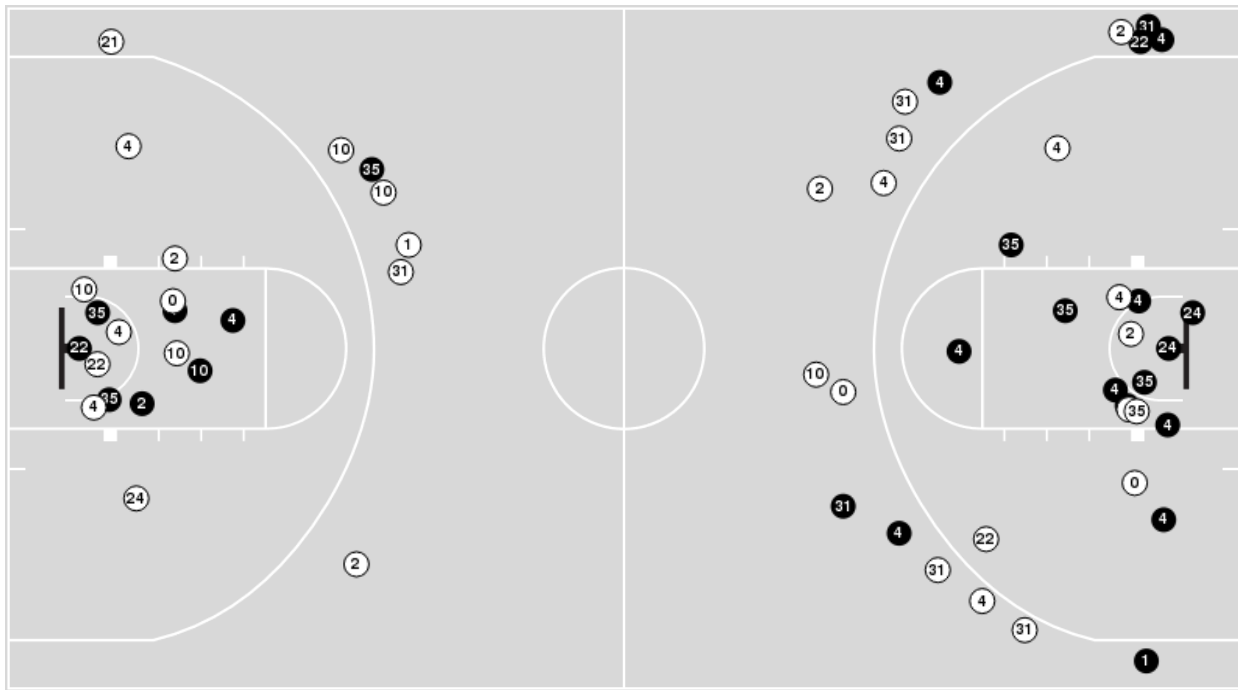


Officials: Ron Groover, Bill Covington, Brian O'Connell

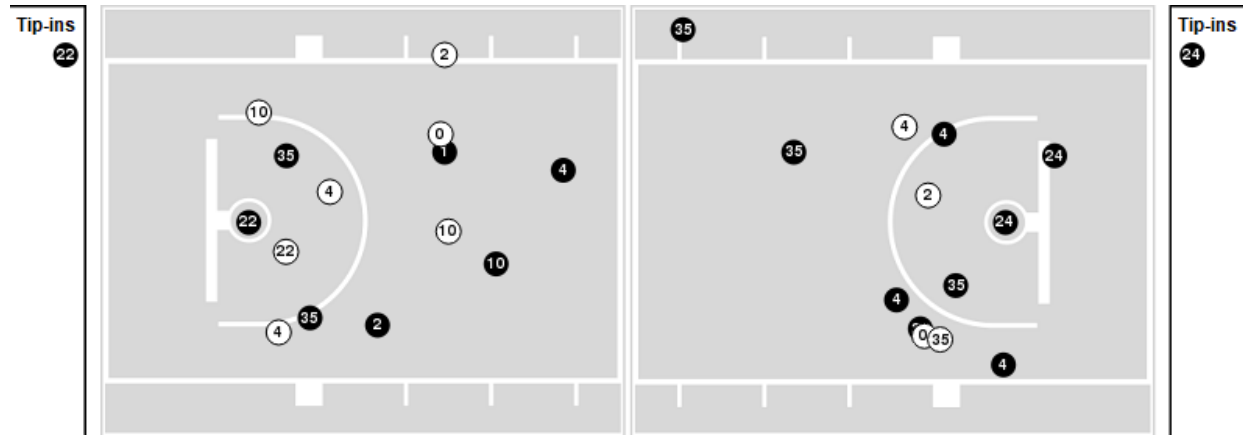
Players => 0, 1, 2, 4, 5, 10, 11, 12, 15, 21, 22, 24, 25, 30, 31, 34, 35, 40, 42, 44FG Types=>AllResults=>All

Florida State

All Field Goals



Blow Up Chart



● Made ○ Missed N - Player Number

Florida State	M/A	%
Field Goals	27/59	46
2 Points	19/36	53
3 Points	8/23	35
Free Throws	17/28	61

Florida State	M/A	%
Points in the Paint	32 (16 / 26)	62
Fast Break Points	8 (5/6)	83
Second Chance Points	11 (5/12)	42
Effective FG%	53	



Louisville at Florida State

01/08/22 Donald L. Tucker Center, Tallahassee
2021-22 FSU Men's Basketball

Game Time: 8:00 PM
Game Duration: 2:06
Attendance: 9,527

Officials: Ron Groover, Bill Covington, Brian O'Connell

Louisville

Lineup	Quarter On	Time On	Quarter Off	Time Off	Time on Court	Score	Score Diff	Reb	Stl	Tov	Ass	PPP
0- Locke N/ 5- Williams M/ 10- Williamson S/ 13- West J/ 33- Cross M/	1	20:00	1	16:37	03:23	7-4	3	5	0	0	1	1.4000
0- Locke N/ 10- Williamson S/ 13- West J/ 21- Curry S/ 33- Cross M/	1	16:37	1	14:25	02:12	2-7	-5	2	0	0	0	0.5000
3- Ellis E/ 10- Williamson S/ 11- Faulkner M/ 21- Curry S/ 24- Withers J/	1	14:25	1	14:00	00:25	3-0	3	2	0	0	0	1.2931
3- Ellis E/ 5- Williams M/ 10- Williamson S/ 11- Faulkner M/ 24- Withers J/	1	14:00	1	13:38	00:22	0-1	-1	0	0	0	0	0.0000
3- Ellis E/ 5- Williams M/ 11- Faulkner M/ 14- Davis D/ 24- Withers J/	1	13:38	1	09:52	03:46	8-9	-1	3	0	1	1	1.5038
3- Ellis E/ 5- Williams M/ 10- Williamson S/ 11- Faulkner M/ 24- Withers J/	1	09:52	1	09:19	00:33	1-0	1	1	0	1	0	0.6944
0- Locke N/ 5- Williams M/ 10- Williamson S/ 11- Faulkner M/ 24- Withers J/	1	09:19	1	07:17	02:02	5-7	-2	0	0	1	2	1.2500
0- Locke N/ 5- Williams M/ 10- Williamson S/ 13- West J/ 33- Cross M/	1	07:17	1	05:15	02:02	3-6	-3	1	0	1	1	1.0000
3- Ellis E/ 10- Williamson S/ 13- West J/ 21- Curry S/ 33- Cross M/	1	05:15	1	03:48	01:27	4-1	3	2	0	0	0	2.1277
3- Ellis E/ 10- Williamson S/ 11- Faulkner M/ 21- Curry S/ 33- Cross M/	1	03:48	1	03:14	00:34	1-3	-2	0	0	0	0	2.2727
3- Ellis E/ 5- Williams M/ 10- Williamson S/ 11- Faulkner M/ 24- Withers J/	1	03:14	1	02:00	01:14	1-4	-3	0	0	1	0	0.4098
0- Locke N/ 3- Ellis E/ 5- Williams M/ 11- Faulkner M/ 24- Withers J/	1	02:00	2	20:00	02:00	5-8	-3	1	0	0	1	1.6667
0- Locke N/ 5- Williams M/ 10- Williamson S/ 13- West J/ 33- Cross M/	2	20:00	2	17:13	02:47	0-2	-2	2	0	1	0	0.0000
0- Locke N/ 5- Williams M/ 10- Williamson S/ 11- Faulkner M/ 33- Cross M/	2	17:13	2	16:04	01:09	0-2	-2	1	0	2	0	0.0000
0- Locke N/ 3- Ellis E/ 5- Williams M/ 11- Faulkner M/ 33- Cross M/	2	16:04	2	14:57	01:07	0-0	0	0	1	0	0	0.0000
3- Ellis E/ 11- Faulkner M/ 14- Davis D/ 21- Curry S/ 33- Cross M/	2	14:57	2	13:20	01:37	5-0	5	3	1	0	2	1.2500
3- Ellis E/ 11- Faulkner M/ 14- Davis D/ 21- Curry S/ 24- Withers J/	2	13:20	2	10:08	03:12	7-2	5	6	0	0	1	1.5766
3- Ellis E/ 11- Faulkner M/ 14- Davis D/ 21- Curry S/ 33- Cross M/	2	10:08	2	08:28	01:40	0-1	-1	3	0	1	0	0.0000
0- Locke N/ 3- Ellis E/ 11- Faulkner M/ 21- Curry S/ 33- Cross M/	2	08:28	2	08:09	00:19	2-1	1	0	0	0	0	2.2727
0- Locke N/ 3- Ellis E/ 5- Williams M/ 11- Faulkner M/ 33- Cross M/	2	08:09	2	05:31	02:38	5-3	2	3	0	1	0	0.9191
3- Ellis E/ 5- Williams M/ 10- Williamson S/ 11- Faulkner M/ 33- Cross M/	2	05:31	2	05:18	00:13	0-0	0	0	0	0	0	0.0000
3- Ellis E/ 5- Williams M/ 10- Williamson S/ 13- West J/ 33- Cross M/	2	05:18	2	05:13	00:05	0-1	-1	0	0	0	0	0.0000
0- Locke N/ 5- Williams M/ 10- Williamson S/ 13- West J/ 33- Cross M/	2	05:13	2	04:32	00:41	2-2	0	0	0	0	1	2.0000
0- Locke N/ 5- Williams M/ 10- Williamson S/ 11- Faulkner M/ 33- Cross M/	2	04:32	2	01:51	02:41	2-8	-6	2	0	0	0	0.6667
3- Ellis E/ 10- Williamson S/ 11- Faulkner M/ 21- Curry S/ 33- Cross M/	2	01:51	2	01:16	00:35	4-2	2	0	0	0	1	2.1277
0- Locke N/ 3- Ellis E/ 10- Williamson S/ 11- Faulkner M/ 21- Curry S/	2	01:16	2	00:53	00:22	0-2	-2	1	0	0	0	0.0000
0- Locke N/ 3- Ellis E/ 11- Faulkner M/ 21- Curry S/ 33- Cross M/	2	00:53	2	00:00	00:54	3-3	0	0	1	0	0	1.5000



Louisville at Florida State

01/08/22 Donald L. Tucker Center, Tallahassee
2021-22 FSU Men's Basketball

Game Time: 8:00 PM
Game Duration: 2:06
Attendance: 9,527

Officials: Ron Groover, Bill Covington, Brian O'Connell

Florida State

Lineup	Quarter On	Time On	Quarter Off	Time Off	Time on Court	Score	Score Diff	Reb	Stl	Tov	Ass	PPP
0- Evans R/ 2- Polite A/ 4- Mills C/ 10- Osborne M/ 22- Butler J/	1	20:00	1	16:37	03:23	4-7	-3	4	0	0	0	0.6803
1- Warley J/ 4- Mills C/ 22- Butler J/ 24- McLeod N/ 35- Cleveland M/	1	16:37	1	16:06	00:31	2-0	2	1	0	0	0	2.0000
1- Warley J/ 4- Mills C/ 24- McLeod N/ 31- Wilkes W/ 35- Cleveland M/	1	16:06	1	14:25	01:41	5-2	3	2	0	0	1	1.4535
1- Warley J/ 2- Polite A/ 24- McLeod N/ 31- Wilkes W/ 35- Cleveland M/	1	14:25	1	13:00	01:25	3-4	-1	1	1	0	1	1.0417
0- Evans R/ 2- Polite A/ 24- McLeod N/ 31- Wilkes W/ 35- Cleveland M/	1	13:00	1	11:18	01:42	2-3	-1	4	0	0	0	1.0000
0- Evans R/ 4- Mills C/ 10- Osborne M/ 21- Fletcher C/ 35- Cleveland M/	1	11:18	1	09:52	01:26	5-4	1	0	0	0	1	2.5000
0- Evans R/ 2- Polite A/ 4- Mills C/ 10- Osborne M/ 21- Fletcher C/	1	09:52	1	09:04	00:48	0-1	-1	0	0	1	0	0.0000
0- Evans R/ 2- Polite A/ 4- Mills C/ 10- Osborne M/ 22- Butler J/	1	09:04	1	05:15	03:49	13-8	5	2	2	1	4	2.0186
1- Warley J/ 2- Polite A/ 4- Mills C/ 24- McLeod N/ 31- Wilkes W/	1	05:15	1	03:48	01:27	1-4	-3	1	0	0	0	0.4098
1- Warley J/ 4- Mills C/ 24- McLeod N/ 31- Wilkes W/ 35- Cleveland M/	1	03:48	1	03:14	00:34	3-1	2	0	0	0	1	3.0000
1- Warley J/ 2- Polite A/ 24- McLeod N/ 31- Wilkes W/ 35- Cleveland M/	1	03:14	2	20:00	03:14	12-6	6	3	0	0	3	2.4000
0- Evans R/ 2- Polite A/ 4- Mills C/ 10- Osborne M/ 22- Butler J/	2	20:00	2	17:46	02:14	0-0	0	3	0	0	0	0.0000
0- Evans R/ 4- Mills C/ 10- Osborne M/ 22- Butler J/ 35- Cleveland M/	2	17:46	2	16:52	00:54	2-0	2	0	0	0	0	1.0000
0- Evans R/ 2- Polite A/ 10- Osborne M/ 22- Butler J/ 35- Cleveland M/	2	16:52	2	16:04	00:48	2-0	2	2	1	0	0	2.0000
0- Evans R/ 2- Polite A/ 22- Butler J/ 24- McLeod N/ 35- Cleveland M/	2	16:04	2	14:57	01:07	0-0	0	1	0	1	0	0.0000
0- Evans R/ 2- Polite A/ 24- McLeod N/ 31- Wilkes W/ 35- Cleveland M/	2	14:57	2	13:20	01:37	0-5	-5	2	0	1	0	0.0000
1- Warley J/ 2- Polite A/ 10- Osborne M/ 31- Wilkes W/ 35- Cleveland M/	2	13:20	2	10:40	02:40	2-7	-5	2	0	0	1	0.5814
0- Evans R/ 2- Polite A/ 4- Mills C/ 10- Osborne M/ 31- Wilkes W/	2	10:40	2	10:24	00:16	0-0	0	0	0	0	0	0.0000
0- Evans R/ 2- Polite A/ 4- Mills C/ 10- Osborne M/ 21- Fletcher C/	2	10:24	2	10:08	00:16	0-0	0	1	0	0	0	0.0000
0- Evans R/ 4- Mills C/ 10- Osborne M/ 21- Fletcher C/ 35- Cleveland M/	2	10:08	2	07:11	02:57	3-2	1	3	1	1	0	0.4839
1- Warley J/ 4- Mills C/ 10- Osborne M/ 21- Fletcher C/ 35- Cleveland M/	2	07:11	2	05:31	01:40	2-5	-3	1	0	0	0	0.5814
1- Warley J/ 2- Polite A/ 10- Osborne M/ 21- Fletcher C/ 35- Cleveland M/	2	05:31	2	04:32	00:59	4-2	2	1	0	0	0	2.2727
1- Warley J/ 2- Polite A/ 21- Fletcher C/ 24- McLeod N/ 35- Cleveland M/	2	04:32	2	01:51	02:41	7-2	5	2	0	0	1	2.3333
0- Evans R/ 2- Polite A/ 4- Mills C/ 10- Osborne M/ 35- Cleveland M/	2	01:51	2	00:39	01:12	5-7	-2	1	0	0	1	1.8116
0- Evans R/ 1- Warley J/ 2- Polite A/ 4- Mills C/ 10- Osborne M/	2	00:39	2	00:00	00:39	2-0	2	1	0	1	0	1.0638



Louisville at Florida State

01/08/22 Donald L. Tucker Center, Tallahassee
2021-22 FSU Men's Basketball

Game Time: 8:00 PM
Game Duration: 2:06
Attendance: 9,527

Officials: Ron Groover, Bill Covington, Brian O'Connell

Louisville

Lineup	Time	Score	Score Diff	Pts/Min	Reb	Stl	Tov	Ass	PPP
0- Locke N/ 5- Williams M/ 10- Williamson S/ 13- West J/ 33- Cross M/	08:53	12-14	-2	1.3508	8	0	2	3	0.9231
0- Locke N/ 5- Williams M/ 10- Williamson S/ 11- Faulkner M/ 33- Cross M/	03:50	2-10	-8	0.5217	3	0	2	0	0.3333
3- Ellis E/ 5- Williams M/ 11- Faulkner M/ 14- Davis D/ 24- Withers J/	03:46	8-9	-1	2.1239	3	0	1	1	1.5038
0- Locke N/ 3- Ellis E/ 5- Williams M/ 11- Faulkner M/ 33- Cross M/	03:45	5-3	2	1.3333	3	1	1	0	0.7764
3- Ellis E/ 11- Faulkner M/ 14- Davis D/ 21- Curry S/ 33- Cross M/	03:17	5-1	4	1.5228	6	1	1	2	0.7143
3- Ellis E/ 11- Faulkner M/ 14- Davis D/ 21- Curry S/ 24- Withers J/	03:12	7-2	5	2.1875	6	0	0	1	1.5766
0- Locke N/ 10- Williamson S/ 13- West J/ 21- Curry S/ 33- Cross M/	02:12	2-7	-5	0.9091	2	0	0	0	0.5000
3- Ellis E/ 5- Williams M/ 10- Williamson S/ 11- Faulkner M/ 24- Withers J/	02:09	2-5	-3	0.9302	1	0	2	0	0.5155
0- Locke N/ 5- Williams M/ 10- Williamson S/ 11- Faulkner M/ 24- Withers J/	02:02	5-7	-2	2.4590	0	0	1	2	1.2500
0- Locke N/ 3- Ellis E/ 5- Williams M/ 11- Faulkner M/ 24- Withers J/	02:00	5-8	-3	2.5000	1	0	0	1	1.6667
3- Ellis E/ 10- Williamson S/ 13- West J/ 21- Curry S/ 33- Cross M/	01:27	4-1	3	2.7586	2	0	0	0	2.1277
0- Locke N/ 3- Ellis E/ 11- Faulkner M/ 21- Curry S/ 33- Cross M/	01:13	5-4	1	4.1096	0	1	0	0	1.7361
3- Ellis E/ 10- Williamson S/ 11- Faulkner M/ 21- Curry S/ 33- Cross M/	01:09	5-5	0	4.3478	0	0	0	1	2.1552
3- Ellis E/ 10- Williamson S/ 11- Faulkner M/ 21- Curry S/ 24- Withers J/	00:25	3-0	3	7.2000	2	0	0	0	1.2931
0- Locke N/ 3- Ellis E/ 10- Williamson S/ 11- Faulkner M/ 21- Curry S/	00:22	0-2	-2	0.0000	1	0	0	0	0.0000
3- Ellis E/ 5- Williams M/ 10- Williamson S/ 11- Faulkner M/ 33- Cross M/	00:13	0-0	0	0.0000	0	0	0	0	0.0000
3- Ellis E/ 5- Williams M/ 10- Williamson S/ 13- West J/ 33- Cross M/	00:05	0-1	-1	0.0000	0	0	0	0	0.0000



Louisville at Florida State

01/08/22 Donald L. Tucker Center, Tallahassee
2021-22 FSU Men's Basketball

Game Time: 8:00 PM

Game Duration: 2:06

Attendance: 9,527

Officials: Ron Groover, Bill Covington, Brian O'Connell

Florida State

Lineup	Time	Score	Score Diff	Pts/Min	Reb	Stl	Tov	Ass	PPP
0- Evans R/ 2- Polite A/ 4- Mills C/ 10- Osborne M/ 22- Butler J/	09:26	17-15	2	1.8021	9	2	1	4	1.1872
1- Warley J/ 2- Polite A/ 24- McLeod N/ 31- Wilkes W/ 35- Cleveland M/	04:39	15-10	5	3.2258	4	1	0	4	1.9036
0- Evans R/ 4- Mills C/ 10- Osborne M/ 21- Fletcher C/ 35- Cleveland M/	04:23	8-6	2	1.8251	3	1	1	1	0.9756
0- Evans R/ 2- Polite A/ 24- McLeod N/ 31- Wilkes W/ 35- Cleveland M/	03:19	2-8	-6	0.6030	6	0	1	0	0.3676
1- Warley J/ 2- Polite A/ 21- Fletcher C/ 24- McLeod N/ 35- Cleveland M/	02:41	7-2	5	2.6087	2	0	0	1	2.3333
1- Warley J/ 2- Polite A/ 10- Osborne M/ 31- Wilkes W/ 35- Cleveland M/	02:40	2-7	-5	0.7500	2	0	0	1	0.5814
1- Warley J/ 4- Mills C/ 24- McLeod N/ 31- Wilkes W/ 35- Cleveland M/	02:15	8-3	5	3.5556	2	0	0	2	1.8018
1- Warley J/ 4- Mills C/ 10- Osborne M/ 21- Fletcher C/ 35- Cleveland M/	01:40	2-5	-3	1.2000	1	0	0	0	0.5814
1- Warley J/ 2- Polite A/ 4- Mills C/ 24- McLeod N/ 31- Wilkes W/	01:27	1-4	-3	0.6897	1	0	0	0	0.4098
0- Evans R/ 2- Polite A/ 4- Mills C/ 10- Osborne M/ 35- Cleveland M/	01:12	5-7	-2	4.1667	1	0	0	1	1.8116
0- Evans R/ 2- Polite A/ 22- Butler J/ 24- McLeod N/ 35- Cleveland M/	01:07	0-0	0	0.0000	1	0	1	0	0.0000
0- Evans R/ 2- Polite A/ 4- Mills C/ 10- Osborne M/ 21- Fletcher C/	01:04	0-1	-1	0.0000	1	0	1	0	0.0000
1- Warley J/ 2- Polite A/ 10- Osborne M/ 21- Fletcher C/ 35- Cleveland M/	00:59	4-2	2	4.0678	1	0	0	0	2.2727
0- Evans R/ 4- Mills C/ 10- Osborne M/ 22- Butler J/ 35- Cleveland M/	00:54	2-0	2	2.2222	0	0	0	0	1.0000
0- Evans R/ 2- Polite A/ 10- Osborne M/ 22- Butler J/ 35- Cleveland M/	00:48	2-0	2	2.5000	2	1	0	0	2.0000
0- Evans R/ 1- Warley J/ 2- Polite A/ 4- Mills C/ 10- Osborne M/	00:39	2-0	2	3.0769	1	0	1	0	1.0638
1- Warley J/ 4- Mills C/ 22- Butler J/ 24- McLeod N/ 35- Cleveland M/	00:31	2-0	2	3.8710	1	0	0	0	2.0000
0- Evans R/ 2- Polite A/ 4- Mills C/ 10- Osborne M/ 31- Wilkes W/	00:16	0-0	0	0.0000	0	0	0	0	0.0000